

Anti-ELAVL1 antibody (C-Term) (STJ140321)

GENERAL INFORMATION

| | |
|---------------|-------------------------------|
| Product Type | Primary antibodies |
| Applications | WB |
| Host / Source | Goat |
| Reactivity | Human/Rat/Mouse/Canine/Monkey |

PRODUCT PROPERTIES

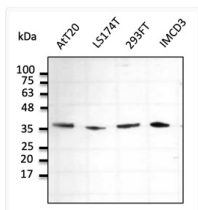
| | |
|---------------------|--|
| Clonality | Polyclonal |
| Concentration | 3 mg/mL |
| Conjugation | Unconjugated |
| Purification | Epitope affinity purified |
| Dilution Range | WB:1:500-1:5,000 |
| Formulation | PBS, 20% Glycerol and 0.05% Sodium Azide. |
| Isotype | IgG |
| Storage Instruction | For continuous use, store at 2-8 C for one-two days. For extended storage, store in -20 C freezer. Working dilution samples should be discarded if not used within 12 hours. |

TARGET INFORMATION

| | |
|--------------------|--|
| Immunogen Region | C-Term |
| Immunogen Sequence | MTNVKIVIRDFNTNKCKGFGF TNVKIVIRDFNTNKCKGFGFV NVKIVIRDFNTNKCKGFGFVT |
| Specificity | Detects endogenous levels of ELAVL1 by Western blot in the whole cell lysates (H69, HeLa, MCF7, AtT20, LS174T, 293HEK, IMCD3, Jurkat, COS7, SHSY5Y, NIH3T3, etc.). |

ADDITIONAL INFORMATION

Note STRICTLY FOR FURTHER SCIENTIFIC RESEARCH USE ONLY (RUO). MUST NOT TO BE USED IN DIAGNOSTIC OR THERAPEUTIC APPLICATIONS.



Anti ELAVL1 Goat Polyclonal antibody western blot STJ140321