

## Anti-EWSR1 antibody (N-Term) (STJ140319)

### GENERAL INFORMATION

Product Type	Primary antibodies
Applications	WB
Host / Source	Goat
Reactivity	Human/Rat/Mouse/Canine/Monkey

### PRODUCT PROPERTIES

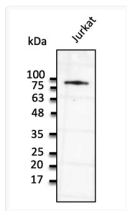
Clonality	Polyclonal
Concentration	3 mg/mL
Conjugation	Unconjugated
Purification	Epitope affinity purified
Dilution Range	WB:1:500-1:2, 000
Formulation	PBS, 20% Glycerol and 0.05% Sodium Azide.
Isotype	IgG
Storage Instruction	For continuous use, store at 2-8 C for one-two days. For extended storage, store in -20 C freezer. Working dilution samples should be discarded if not used within 12 hours.

### TARGET INFORMATION

Immunogen Region	N-Term
Immunogen Sequence	MASTDYSTYSQAAAQQGYSYA ASTDYSTYSQAAAQQGYSAY STDYSTYSQAAAQQGYSAYT TDYSTYSQAAAQQGYSAYTA DYSTYSQAAAQQGYSAYTAQ YSTYSQAAAQQGYSAYTAQP STYSQAAAQQGYSAYTAQPT
Specificity	Detects endogenous levels of EWSR1 by Western blot in the whole cell lysates (HeLa, LS174T, H69, Jurkat, SHSY5Y, 3T3NIH, AtT20, etc.).

### ADDITIONAL INFORMATION

Note STRICTLY FOR FURTHER SCIENTIFIC RESEARCH USE ONLY (RUO). MUST NOT TO BE USED IN DIAGNOSTIC OR THERAPEUTIC APPLICATIONS.



Anti EWSR1 Goat Polyclonal antibody western blot STJ140319