

Anti-mRaspberry antibody (STJ140289)

GENERAL INFORMATION

| | |
|---------------|-----------------------|
| Product Type | Primary antibodies |
| Applications | WB/IF/IHC-P/IHC-F/IEM |
| Host / Source | Goat |
| Reactivity | RFP |

PRODUCT PROPERTIES

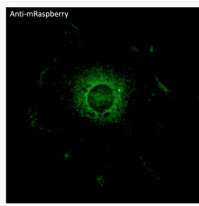
| | |
|---------------------|---|
| Clonality | Polyclonal |
| Concentration | 3 mg/mL |
| Conjugation | Unconjugated |
| Purification | Epitope affinity purified |
| Dilution Range | WB 1:500-1:5000 IHC-P 1:50-1:500 IHC-F 1:50-1:500 IF 1:50-1:500 IEM 1:50-1:500 |
| Formulation | PBS, 20% Glycerol and 0.05% Sodium Azide. |
| Isotype | IgG |
| Storage Instruction | For continuous use, store at 2-8 C for one-two days. For extended storage, store in-20 C freezer. Working dilution samples should be discarded if not used within 12 hours. |

TARGET INFORMATION

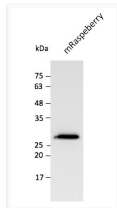
| | |
|-------------|--|
| Specificity | In 293HEK cells transfected with cds plasmid detects a band of 27 kDa by Western blot. This antibody does not recognize GFP (green fluorescent protein). |
|-------------|--|

ADDITIONAL INFORMATION

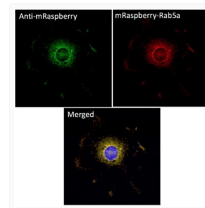
Note STRICTLY FOR FURTHER SCIENTIFIC RESEARCH USE ONLY (RUO). MUST NOT TO BE USED IN DIAGNOSTIC OR THERAPEUTIC APPLICATIONS.



Anti mRaspberry Goat Polyclonal antibody immunofluorescence STJ140289



Anti mRaspberry Goat Polyclonal antibody western blot hek293 STJ140289



Anti mRaspberry Goat Polyclonal antibody immunofluorescence STJ140289