

## Anti-GFP antibody {DyLight®633} (STJ140277)

### GENERAL INFORMATION

Product Type	Primary antibodies
Applications	WB/IF/IHC-F
Host / Source	Goat
Reactivity	GFP

### PRODUCT PROPERTIES

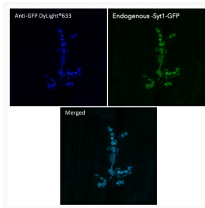
Clonality	Polyclonal
Concentration	2 mg/mL
Conjugation	DyLight®633
Purification	Epitope affinity purified
Dilution Range	WB 1:500-1:5000 IHC-F 1:50-1:1000 IF 1:50-1:1000
Formulation	PBS, 20% Glycerol, 0.05% ProClin® and 0.05% Sodium Azide.
Isotype	IgG
Storage Instruction	For continuous use, store at 2-8 C for one-two days. For extended storage, store in-20 C freezer. Working dilution samples should be discarded if not used within 12 hours.

### TARGET INFORMATION

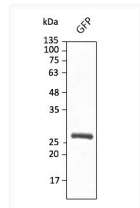
Immunogen Sequence	MVSKGEELFTGVVPILVELD VSKGEELFTGVVPILVELDG SKGEELFTGVVPILVELDGD KGEELFTGVVPILVELDGDV GEELFTGVVPILVELDGDVN EELFTGVVPILVELDGDVNG ELFTGVVPILVELDGDVNGH LFTGVVPILVELDGDVNGHK FTGVVPILVELDGDVNGHKF TGVVPILVELDGDVNGHKFS GVPILVELDGDVNGHKFSV VVPILVELDGDVNGHKFSV
Specificity	In 293HEK cells transfected with cds plasmid detects a band of 27 kDa by Western blot. This antibody does not recognize mCherry fluorescent protein.

### ADDITIONAL INFORMATION

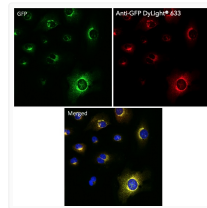
Note **STRICTLY FOR FURTHER SCIENTIFIC RESEARCH USE ONLY (RUO). MUST NOT TO BE USED IN DIAGNOSTIC OR THERAPEUTIC APPLICATIONS.**



Anti GFP Goat Polyclonal antibody immunofluorescence drosophila STJ140277



Anti GFP Goat Polyclonal antibody western blot hek293 STJ140277



Anti GFP Goat Polyclonal antibody immunofluorescence human STJ140277