

## Anti-GFP antibody {DyLight®488} (STJ140275)

### GENERAL INFORMATION

Product Type	Primary antibodies
Applications	WB/IF/IHC-F
Host / Source	Goat
Reactivity	GFP

### PRODUCT PROPERTIES

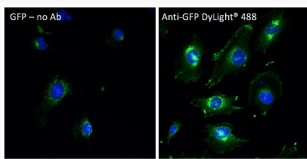
Clonality	Polyclonal
Concentration	2 mg/mL
Conjugation	DyLight®488
Purification	Epitope affinity purified
Dilution Range	WB 1:500-1:5000 IHC-F 1:50-1:1000 IF 1:50-1:1000
Formulation	PBS, 20% Glycerol, 0.05% ProClin® and 0.05% Sodium Azide.
Isotype	IgG
Storage Instruction	For continuous use, store at 2-8 C for one-two days. For extended storage, store in-20 C freezer. Working dilution samples should be discarded if not used within 12 hours.

### TARGET INFORMATION

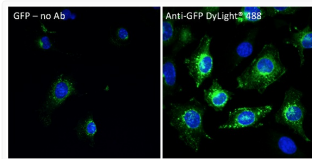
Immunogen Sequence	MVSKGEELFTGVVPILVELD VSKGEELFTGVVPILVELDG SKGEELFTGVVPILVELDGD KGEELFTGVVPILVELDGDV GEELFTGVVPILVELDGDVN EELFTGVVPILVELDGDVNG ELFTGVVPILVELDGDVNGH LFTGVVPILVELDGDVNGHK FTGVVPILVELDGDVNGHKF TGVVPILVELDGDVNGHKFS GVPILVELDGDVNGHKFSV VVPILVELDGDVNGHKFSV
Specificity	In 293HEK cells transfected with cds plasmid detects a band of 27 kDa by Western blot. This antibody does not recognize mCherry fluorescent protein.

### ADDITIONAL INFORMATION

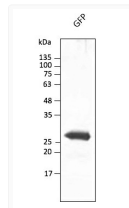
Note STRICTLY FOR FURTHER SCIENTIFIC RESEARCH USE ONLY (RUO). MUST NOT TO BE USED IN DIAGNOSTIC OR THERAPEUTIC APPLICATIONS.



Anti GFP Goat Polyclonal antibody immunofluorescence human STJ140275



Anti GFP Goat Polyclonal antibody immunofluorescence human STJ140275



Anti GFP Goat Polyclonal antibody western blot hek293 STJ140275