

Chicken Anti-Chicken IgY (Full length) antibody {DyLight®405} (STJ140242)

GENERAL INFORMATION

Product Type	Secondary antibodies
Applications	WB/IF
Host / Source	Chicken
Reactivity	Chicken

PRODUCT PROPERTIES

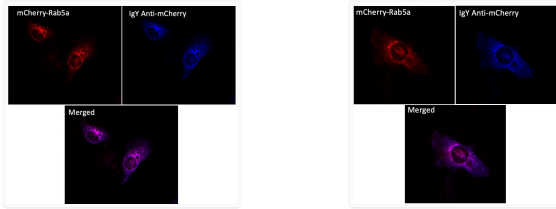
Clonality	Polyclonal
Concentration	2 mg/mL
Conjugation	DyLight®405
Purification	Epitope affinity purified
Dilution Range	WB 1:2000-1:10000 IF 1:100-1:1000
Formulation	PBS, 20% Glycerol, 0.05% ProClin® and 0.05% Sodium Azide.
Isotype	IgY
Storage Instruction	For continuous use, store at 2-8 C for one-two days. For extended storage, store in -20 C freezer. Working dilution samples should be discarded if not used within 12 hours.

TARGET INFORMATION

Immunogen Region	Full length
Specificity	Using serum samples detects chicken IgY by Western blot. Reduced cross-reactivity to other species.

ADDITIONAL INFORMATION

Note STRICTLY FOR FURTHER SCIENTIFIC RESEARCH USE ONLY (RUO). MUST NOT TO BE USED IN DIAGNOSTIC OR THERAPEUTIC APPLICATIONS.



Anti IgY Chicken Polyclonal antibody immunofluorescence STJ140242 Anti IgY Chicken Polyclonal antibody immunofluorescence human STJ140242