

Chicken Anti-Goat IgG (Full length) antibody {DyLight®633} (STJ140224)

GENERAL INFORMATION

Product Type	Secondary antibodies
Applications	WB/IF
Host / Source	Chicken
Reactivity	Goat

PRODUCT PROPERTIES

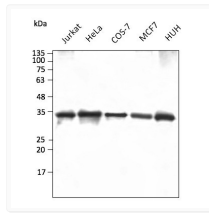
Clonality	Polyclonal
Concentration	2 mg/mL
Conjugation	DyLight®633
Purification	Epitope affinity purified
Dilution Range	WB 1:2000-1:10000 IF 1:100-1:1000
Formulation	PBS, 20% Glycerol, 0.05% ProClin® and 0.05% Sodium Azide.
Isotype	IgY
Storage Instruction	For continuous use, store at 2-8 C for one-two days. For extended storage, store in -20 C freezer. Working dilution samples should be discarded if not used within 12 hours.

TARGET INFORMATION

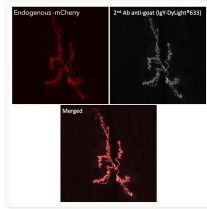
Immunogen Region	Full length
Specificity	Using serum samples detects goat IgG by Western blot. Reduced cross-reactivity to other species.

ADDITIONAL INFORMATION

Note STRICTLY FOR FURTHER SCIENTIFIC RESEARCH USE ONLY (RUO). MUST NOT TO BE USED IN DIAGNOSTIC OR THERAPEUTIC APPLICATIONS.



Anti IgG Chicken Polyclonal antibody western blot
cos7 hela STJ140224



Anti IgG Chicken Polyclonal antibody
immunofluorescence drosophila STJ140224