

Anti-tdTomato antibody {DyLight®550} (STJ140219)

GENERAL INFORMATION

Product Type	Primary antibodies
Applications	WB/IF/IHC-F
Host / Source	Goat
Reactivity	tdTomato/mCherry/red fluorescent protein (DsRed) from so-called disc corals of Discosoma species.

PRODUCT PROPERTIES

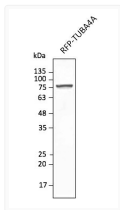
Clonality	Polyclonal
Concentration	2 mg/mL
Conjugation	DyLight®550
Purification	Epitope affinity purified
Dilution Range	WB 1:500-1:2000 IHC-F 1:50-1:1000 IF 1:50-1:500
Formulation	PBS, 20% Glycerol, 0.05% ProClin® and 0.05% Sodium Azide.
Isotype	IgG
Storage Instruction	For continuous use, store at 2-8 C for one-two days. For extended storage, store in-20 C freezer. Working dilution samples should be discarded if not used within 12 hours.

TARGET INFORMATION

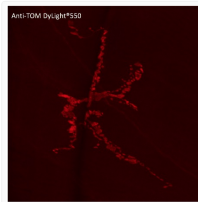
Immunogen Sequence	MVSKGEEDNMAIIKEFMRFK VSKGEEDNMAIIKEFMRFKV SKGEEDNMAIIKEFMRFKVH KGEEDNMAIIKEFMRFKVHM GEEDNMAIIKEFMRFKVHME EEDNMAIIKEFMRFKVHMEG EDNMAIIKEFMRFKVHMEGS DNMAIIKEFMRFKVHMEGSV NMAIIKEFMRFKVHMEGSVN MAIIKEFMRFKVHMEGSVNG AIIKEFMRFKVHMEGSVNGH IIEFMRFKVHMEGSVNGH
Specificity	In 293HEK cells transfected with cds plasmid detects a band of 55 kDa by Western blot. It also detects tdTomato in brain sections by IHC. This antibody is specific for tdTomato and mCherry proteins. It does not cross-react to GFP (green fluorescent p

ADDITIONAL INFORMATION

Note STRICTLY FOR FURTHER SCIENTIFIC RESEARCH USE ONLY (RUO). MUST NOT TO BE USED IN DIAGNOSTIC OR THERAPEUTIC APPLICATIONS.



Anti tdTomato Goat Polyclonal antibody western blot hek293 STJ140219



Anti tdTomato Goat Polyclonal antibody immunofluorescence drosophila STJ140219