

Anti-tdTomato antibody {DyLight®488} (STJ140218)

GENERAL INFORMATION

| | |
|---------------|---|
| Product Type | Primary antibodies |
| Applications | WB/IF/IHC-F |
| Host / Source | Goat |
| Reactivity | tdTomato/mCherry/red fluorescent protein (DsRed) from so-called disc corals of Discosoma species. |

PRODUCT PROPERTIES

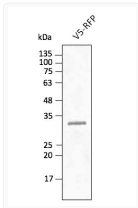
| | |
|---------------------|---|
| Clonality | Polyclonal |
| Concentration | 2 mg/mL |
| Conjugation | DyLight®488 |
| Purification | Epitope affinity purified |
| Dilution Range | WB 1:500-1:2000 IHC-F 1:50-1:1000 IF 1:50-1:500 |
| Formulation | PBS, 20% Glycerol, 0.05% ProClin® and 0.05% Sodium Azide. |
| Isotype | IgG |
| Storage Instruction | For continuous use, store at 2-8 C for one-two days. For extended storage, store in-20 C freezer. Working dilution samples should be discarded if not used within 12 hours. |

TARGET INFORMATION

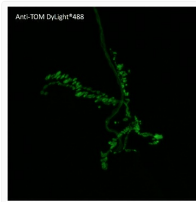
| | |
|--------------------|---|
| Immunogen Sequence | MVSKGEEDNMAIIKEFMRFK VSKGEEDNMAIIKEFMRFKV SKGEEDNMAIIKEFMRFKVH KGEDNMAIIKEFMRFKVHM GEEDNMAIIKEFMRFKVHME EEDNMAIIKEFMRFKVHMEG EDNMAIIKEFMRFKVHMEGS DNMAIIKEFMRFKVHMEGSV NMAIIKEFMRFKVHMEGSVN MAIIKEFMRFKVHMEGSVNG AIIKEFMRFKVHMEGSVNGH IIEFMRFKVHMEGSVNGH |
| Specificity | In 293HEK cells transfected with cds plasmid detects a band of 55 kDa by Western blot. It also detects tdTomato in brain sections by IHC. This antibody is specific for tdTomato and mCherry proteins. It does not cross-react to GFP (green fluorescent p |

ADDITIONAL INFORMATION

Note STRICTLY FOR FURTHER SCIENTIFIC RESEARCH USE ONLY (RUO). MUST NOT TO BE USED IN DIAGNOSTIC OR THERAPEUTIC APPLICATIONS.



Anti tdTomato Goat Polyclonal antibody western blot hek293 STJ140218



Anti tdTomato Goat Polyclonal antibody immunofluorescence drosophila STJ140218