

## Anti-tdTomato antibody {DyLight®405} (STJ140217)

### GENERAL INFORMATION

Product Type	Primary antibodies
Applications	WB/IF/IHC-F
Host / Source	Goat
Reactivity	tdTomato/mCherry/red fluorescent protein (DsRed) from so-called disc corals of Discosoma species.

### PRODUCT PROPERTIES

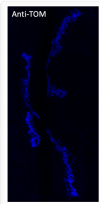
Clonality	Polyclonal
Concentration	2 mg/mL
Conjugation	DyLight®405
Purification	Epitope affinity purified
Dilution Range	WB 1:500-1:2000 IHC-F 1:50-1:1000 IF 1:50-1:500
Formulation	PBS, 20% Glycerol, 0.05% ProClin® and 0.05% Sodium Azide.
Isotype	IgG
Storage Instruction	For continuous use, store at 2-8 C for one-two days. For extended storage, store in-20 C freezer. Working dilution samples should be discarded if not used within 12 hours.

### TARGET INFORMATION

Immunogen Sequence	MVSKGEEDNMAIIKEFMRFK VSKGEEDNMAIIKEFMRFKV SKGEEDNMAIIKEFMRFKVH KGEEDNMAIIKEFMRFKVHM GEEDNMAIIKEFMRFKVHME EEDNMAIIKEFMRFKVHMEG EDNMAIIKEFMRFKVHMEGS DNMAIIKEFMRFKVHMEGSV NMAIIKEFMRFKVHMEGSVN MAIIKEFMRFKVHMEGSVNG AIIKEFMRFKVHMEGSVNGH IIEFMRFKVHMEGSVNGH
Specificity	In 293HEK cells transfected with cds plasmid detects a band of 55 kDa by Western blot. It also detects tdTomato in brain sections by IHC. This antibody is specific for tdTomato and mCherry proteins. It does not cross-react to GFP (green fluorescent p

### ADDITIONAL INFORMATION

Note	STRICTLY FOR FURTHER SCIENTIFIC RESEARCH USE ONLY (RUO). MUST NOT TO BE USED IN DIAGNOSTIC OR THERAPEUTIC APPLICATIONS.
------	---



Anti tdTomato Goat Polyclonal antibody immunofluorescence drosophila STJ140217