

## Chicken Anti-Goat IgG antibody {HRP} (STJ140211)

### GENERAL INFORMATION

Product Type	Secondary antibodies
Applications	WB/ELISA
Host / Source	Chicken
Reactivity	Goat

### PRODUCT PROPERTIES

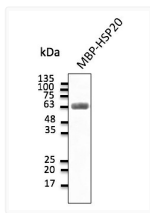
Clonality	Polyclonal
Concentration	2 mg/mL
Conjugation	HRP
Purification	Epitope affinity purified
Dilution Range	WB 1:2000-1:10000 ELISA 1:20000-1:100000
Formulation	PBS, 50% Glycerol and 0.05% Sodium Azide.
Isotype	IgY
Storage Instruction	For continuous use, store at 2-8 C for one-two days. For extended storage, store in-20 C freezer. Working dilution samples should be discarded if not used within 12 hours.

### TARGET INFORMATION

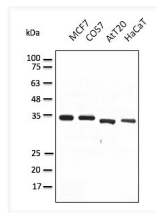
Specificity	Using serum samples detects goat IgG by Western blot. Reduced cross-reactivity to other species.
-------------	--

### ADDITIONAL INFORMATION

Note	STRICTLY FOR FURTHER SCIENTIFIC RESEARCH USE ONLY (RUO). MUST NOT TO BE USED IN DIAGNOSTIC OR THERAPEUTIC APPLICATIONS.
------	---



Anti IgG Chicken Polyclonal antibody western blot  
STJ140211



Anti IgG Chicken Polyclonal antibody western blot  
STJ140211