

## Anti-RFP antibody {DyLight®633} (STJ140210)

### GENERAL INFORMATION

Product Type	Primary antibodies
Applications	WB/IF/IHC-F
Host / Source	Goat
Reactivity	RFP/DsRed/mCherry/mOrange/mPlum/mRFP/mStrawberry/ttdTomato

### PRODUCT PROPERTIES

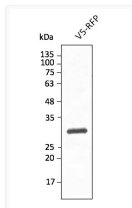
Clonality	Polyclonal
Concentration	2 mg/mL
Conjugation	DyLight®633
Purification	Epitope affinity purified
Dilution Range	WB 1:500-1:2000 IHC-P 1:250-1:1000 IHC-F 1:250-1:1000 IF 1:25-1:250
Formulation	PBS, 20% Glycerol, 0.05% ProClin® and 0.05% Sodium Azide.
Isotype	IgG
Storage Instruction	For continuous use, store at 2-8 C for one-two days. For extended storage, store in -20 C freezer. Working dilution samples should be discarded if not used within 12 hours.

### TARGET INFORMATION

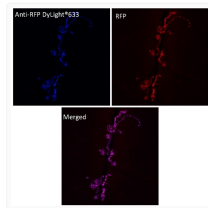
Immunogen Sequence	MVSKGEEDNMAIIKEFMRFK VSKGEEDNMAIIKEFMRFKV SKGEEDNMAIIKEFMRFKVH KGEEDNMAIIKEFMRFKVHM GEEDNMAIIKEFMRFKVHME EEDNMAIIKEFMRFKVHMEG EDNMAIIKEFMRFKVHMEGS DNMAIIKEFMRFKVHMEGSV NMAIIKEFMRFKVHMEGSVN MAIIKEFMRFKVHMEGSVNG AIIKEFMRFKVHMEGSVNGH IIEFMRFKVHMEGSVNGH
Specificity	In 293HEK cells transfected with cds plasmid detects a band of 29 kDa by Western blot. This antibody also recognizes very well ttdTomato and does not cross-react to GFP (green fluorescent protein).

### ADDITIONAL INFORMATION

Note STRICTLY FOR FURTHER SCIENTIFIC RESEARCH USE ONLY (RUO). MUST NOT TO BE USED IN DIAGNOSTIC OR THERAPEUTIC APPLICATIONS.



Anti RFP Goat Polyclonal antibody western blot hek293 STJ140210



Anti RFP Goat Polyclonal antibody immunofluorescence drosophila STJ140210