

Anti-Asense antibody (254 aa C-Term) (STJ140181)

GENERAL INFORMATION

Product Type	Primary antibodies
Applications	WB/IF
Host / Source	Goat
Reactivity	D.melanogaster

PRODUCT PROPERTIES

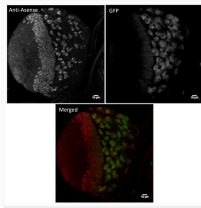
Clonality	Polyclonal
Concentration	3 mg/mL
Conjugation	Unconjugated
Purification	Epitope affinity purified
Dilution Range	WB 1:500-1:2000 IF 1:100-1:1000
Formulation	PBS, 20% Glycerol and 0.05% Sodium Azide.
Isotype	IgG
Storage Instruction	For continuous use, store at 2-8 C for one-two days. For extended storage, store in -20 C freezer. Working dilution samples should be discarded if not used within 12 hours.

TARGET INFORMATION

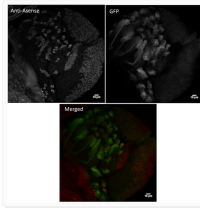
Immunogen Region	254 aa C-Term
Immunogen Sequence	DCLDEHFDDSLSNYEMDEQQ CLDEHFDDSLSNYEMDEQQT LDEHFDDSLSNYEMDEQQT DEHFDDSLSNYEMDEQQT VQ EHFDDSLSNYEMDEQQT VQQ HFDDSLSNYEMDEQQT VQQT FDDSLSNYEMDEQQT VQQTL DDSLSNYEMDEQQT VQQT LS DLSLSNYEMDEQQT VQQT LSE SLSNYEMDEQQT VQQT LSED LSNYEMDEQQT VQQT LSEDM SNYEMDEQQT VQQT LSEDM
Specificity	Detects endogenous levels of Asense by IF.

ADDITIONAL INFORMATION

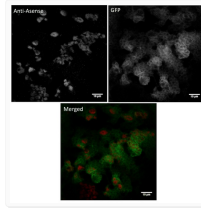
Note STRICTLY FOR FURTHER SCIENTIFIC RESEARCH USE ONLY (RUO). MUST NOT TO BE USED IN DIAGNOSTIC OR THERAPEUTIC APPLICATIONS.



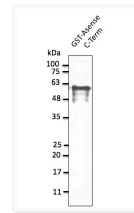
Anti Asense Goat Polyclonal antibody immunofluorescence drosophila STJ140181



Anti Asense Goat Polyclonal antibody immunofluorescence drosophila STJ140181



Anti Asense Goat Polyclonal antibody immunofluorescence drosophila STJ140181



Anti Asense Goat Polyclonal antibody western blot STJ140181