

## Anti-TMEM160 antibody (160aa C-Term) (STJ140161)

### GENERAL INFORMATION

Product Type	Primary antibodies
Applications	WB
Host / Source	Goat
Reactivity	Human/Rat/Mouse/Canine/Monkey

### PRODUCT PROPERTIES

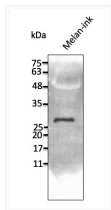
Clonality	Polyclonal
Concentration	2 mg/mL
Conjugation	Unconjugated
Purification	This antibody is epitope-affinity purified from goat antiserum.
Dilution Range	WB 1:500-1:2000
Formulation	PBS, 20% Glycerol and 0.05% Sodium Azide.
Isotype	IgG
Storage Instruction	For continuous use, store at 2-8 C for one-two days. For extended storage, store in -20 C freezer. Working dilution samples should be discarded if not used within 12 hours.

### TARGET INFORMATION

Gene ID	<a href="#">54958</a>
Gene Symbol	<a href="#">TMEM160</a>
UniProt ID	<a href="#">TM160_HUMAN</a>
Immunogen Region	160aa C-Term
Immunogen Sequence	CVELVPEDDGTASAEGPDEA VELVPEDDGTASAEGPDEAG
Specificity	Detects endogenous levels of TMEM160 in Melan-ink and NIH3T3 by Western blot.

### ADDITIONAL INFORMATION

Note STRICTLY FOR FURTHER SCIENTIFIC RESEARCH USE ONLY (RUO). MUST NOT TO BE USED IN DIAGNOSTIC OR THERAPEUTIC APPLICATIONS.



Anti TMEM160 Goat Polyclonal antibody western blot STJ140161