

Anti-ADORA2A antibody (360aa C-Term) (STJ140159)

GENERAL INFORMATION

Product Type	Primary antibodies
Applications	WB/IHC-F/IHC-P
Host / Source	Goat
Reactivity	Human/Rat/Mouse/Canine/Monkey

PRODUCT PROPERTIES

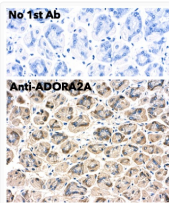
Clonality	Polyclonal
Concentration	3 mg/mL
Conjugation	Unconjugated
Purification	This antibody is epitope-affinity purified from goat antiserum.
Dilution Range	WB 1:500-1:2000 IHC-F 1:250-1:1000 IHC-P 1:250-1:1000
Formulation	PBS, 20% Glycerol and 0.05% Sodium Azide.
Isotype	IgG
Storage Instruction	For continuous use, store at 2-8 C for one-two days. For extended storage, store in -20 C freezer. Working dilution samples should be discarded if not used within 12 hours.

TARGET INFORMATION

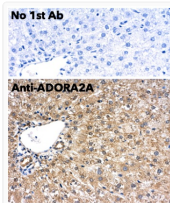
Gene ID	135
Gene Symbol	ADORA2A
UniProt ID	AA2AR_HUMAN
Immunogen Region	360aa C-Term
Immunogen Sequence	YALGLVSGGSAQESQGNTGL ALGLVSGGSAQESQGNTGLP LGLVSGGSAQESQGNTGLPD
Specificity	Detects endogenous levels of ADORA2A in brain by Western blot.

ADDITIONAL INFORMATION

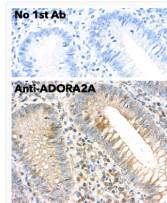
Note STRICTLY FOR FURTHER SCIENTIFIC RESEARCH USE ONLY (RUO). MUST NOT TO BE USED IN DIAGNOSTIC OR THERAPEUTIC APPLICATIONS.



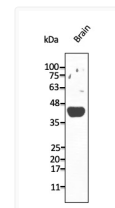
Anti ADORA2A Goat Polyclonal antibody immunohistochemistry mouse STJ140159



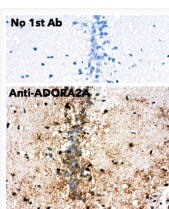
Anti ADORA2A Goat Polyclonal antibody immunohistochemistry mouse liver STJ140159



Anti ADORA2A Goat Polyclonal antibody immunohistochemistry human STJ140159



Anti ADORA2A Goat Polyclonal antibody western blot STJ140159



Anti ADORA2A Goat Polyclonal antibody immunohistochemistry mouse brain STJ140159