

Anti-DIS3-like exonuclease 2 antibody (430aa N-Term) (STJ140155)

GENERAL INFORMATION

Product Type	Primary antibodies
Applications	WB
Host / Source	Goat
Reactivity	D.melanogaster

PRODUCT PROPERTIES

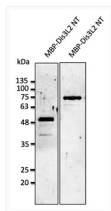
Clonality	Polyclonal
Concentration	3 mg/mL
Conjugation	Unconjugated
Purification	This antibody is epitope-affinity purified from goat antiserum.
Dilution Range	WB 1:500-1:2000
Formulation	PBS, 20% Glycerol and 0.05% Sodium Azide.
Isotype	IgG
Storage Instruction	For continuous use, store at 2-8 C for one-two days. For extended storage, store in -20 C freezer. Working dilution samples should be discarded if not used within 12 hours.

TARGET INFORMATION

Immunogen Region	430aa N-Term
Immunogen Sequence	MPYPLPAHSQVMSETSSVN PYPLPAHSQVMSETSSVNV YPLPAHSQVMSETSSVNV PLYPAHSQVMSETSSVNVDA LYPAHSQVMSETSSVNVDA YPAHSQVMSETSSVNVDA PAHSQVMSETSSVNVDA DRD AHSQVMSETSSVNVDA DRDC HSQVMSETSSVNVDA DRDCR SQVMSETSSVNVDA DRDCRR QVMSETSSVNVDA DRDCRR VMSETSSVNVDA DRDCRR
Specificity	Detects endogenous levels of Dis3L2 in Drosophila protein extracts by Western blot.

ADDITIONAL INFORMATION

Note STRICTLY FOR FURTHER SCIENTIFIC RESEARCH USE ONLY (RUO). MUST NOT TO BE USED IN DIAGNOSTIC OR THERAPEUTIC APPLICATIONS.



Anti DIS3-like exonuclease 2 Goat Polyclonal antibody western blot STJ140155