

Anti-RAB1A antibody (107aa C-Term) (STJ140152)

GENERAL INFORMATION

| | |
|---------------|-------------------------------|
| Product Type | Primary antibodies |
| Applications | WB/IHC-F/IHC-P |
| Host / Source | Goat |
| Reactivity | Human/Rat/Mouse/Canine/Monkey |

PRODUCT PROPERTIES

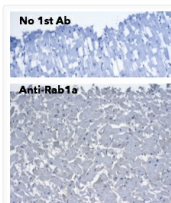
| | |
|---------------------|---|
| Clonality | Polyclonal |
| Concentration | 3 mg/mL |
| Conjugation | Unconjugated |
| Purification | This antibody is epitope-affinity purified from goat antiserum. |
| Dilution Range | WB 1:1000-1:2000 IHC-F 1:100-1:500 IHC-P 1:100-1:500 |
| Formulation | PBS, 20% Glycerol and 0.05% Sodium Azide. |
| Isotype | IgG |
| Storage Instruction | For continuous use, store at 2-8 C for one-two days. For extended storage, store in-20 C freezer. Working dilution samples should be discarded if not used within 12 hours. |

TARGET INFORMATION

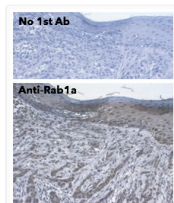
| | |
|--------------------|---|
| Gene ID | 5861 |
| Gene Symbol | RAB1A |
| UniProt ID | RAB1A_HUMAN |
| Immunogen Region | 107aa C-Term |
| Immunogen Sequence | QEIDRYASENVNKLVLGKNC EIDRYASENVNKLVLGKNC D IDRYASENVNKLVLGKNC DL DRYASENVNKLVLGKNC DL T |
| Specificity | Detects endogenous levels of Rab1a (HUH, LS174T, MDA-MB-435, MCF7, Cos7, MCR, Att20, IMCD3, HeLa, MDCK) by Western blot. This antibody does not cross-react with Rab1b. |

ADDITIONAL INFORMATION

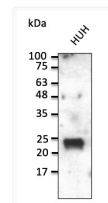
Note STRICTLY FOR FURTHER SCIENTIFIC RESEARCH USE ONLY (RUO). MUST NOT TO BE USED IN DIAGNOSTIC OR THERAPEUTIC APPLICATIONS.



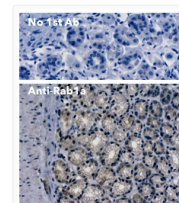
Anti RAB1A Goat Polyclonal antibody immunohistochemistry human STJ140152



Anti RAB1A Goat Polyclonal antibody immunohistochemistry human STJ140152



Anti RAB1A Goat Polyclonal antibody western blot STJ140152



Anti RAB1A Goat Polyclonal antibody immunohistochemistry mouse STJ140152