

Anti-RFP antibody (STJ140145)

GENERAL INFORMATION

Product Type	Primary antibodies
Applications	WB/IF/ELISA
Host / Source	Chicken
Reactivity	RFP/DsRed/tdTomato/mCherry

PRODUCT PROPERTIES

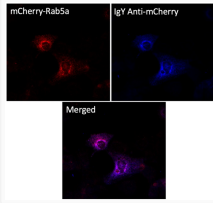
Clonality	Polyclonal
Concentration	2 mg/mL
Conjugation	Unconjugated
Purification	Affinity purified using the immunogen immobilized on a solid support.
Dilution Range	WB 1:10000-1:30000 IF 1:200-1:1000 ELISA 1:20000-1:50000
Formulation	PBS, 20% Glycerol and 0.05% Sodium Azide.
Isotype	IgY
Storage Instruction	For continuous use, store at 2-8 C for one-two days. For extended storage, store in-20 C freezer. Working dilution samples should be discarded if not used within 12 hours.

TARGET INFORMATION

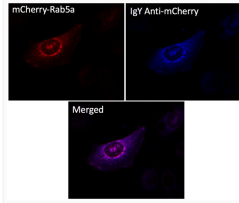
Immunogen Sequence	MVSKGEEDNMAIIEFMRFK VSKGEEDNMAIIEFMRFKV SKGEEDNMAIIEFMRFKVH KGEEDNMAIIEFMRFKVHM GEEDNMAIIEFMRFKVHME EEDNMAIIEFMRFKVHMEG EDNMAIIEFMRFKVHMEGS DNMAIIEFMRFKVHMEGSV NMAIIEFMRFKVHMEGSVN MAIIEFMRFKVHMEGSVNG AIIIEFMRFKVHMEGSVNGH IIEFMRFKVHMEGSVNGH
Specificity	This antibody recognizes a single band with predicted molecular weight in Western blot analysis.

ADDITIONAL INFORMATION

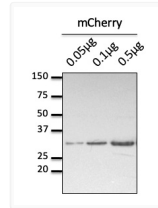
Note STRICTLY FOR FURTHER SCIENTIFIC RESEARCH USE ONLY (RUO). MUST NOT TO BE USED IN DIAGNOSTIC OR THERAPEUTIC APPLICATIONS.



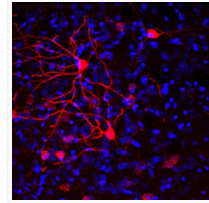
Anti RFP Chicken Polyclonal antibody immunofluorescence STJ140145



Anti RFP Chicken Polyclonal antibody immunofluorescence STJ140145



Anti RFP Chicken Polyclonal antibody western blot STJ140145



Anti RFP Chicken Polyclonal antibody immunofluorescence mouse brain STJ140145