

## Anti-CHM antibody (617 to C-Term) (STJ140142)

### GENERAL INFORMATION

Product Type	Primary antibodies
Applications	WB
Host / Source	Goat
Reactivity	Human/Mouse/Rat/Bovine/Canine/Chicken/Avian/Donkey/Feline/Goat/Guinea Pig/Hamster/Horse/Porcine/Rabbit/Sheep/Simian

### PRODUCT PROPERTIES

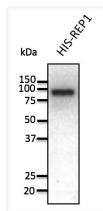
Clonality	Polyclonal
Concentration	4 mg/mL
Conjugation	Unconjugated
Purification	This antibody is epitope-affinity purified from goat antiserum.
Dilution Range	WB 1:500-1:2000
Formulation	PBS, 20% Glycerol and 0.05% Sodium Azide.
Isotype	IgG
Storage Instruction	For continuous use, store at 2-8 C for one-two days. For extended storage, store in -20 C freezer. Working dilution samples should be discarded if not used within 12 hours.

### TARGET INFORMATION

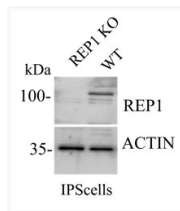
Gene ID	<a href="#">1121</a>
Gene Symbol	<a href="#">CHM</a>
UniProt ID	<a href="#">RAE1_HUMAN</a>
Immunogen Region	617 to C-Term
Immunogen Sequence	IIFDGDSLQPEASESSAIEP IIFDGDSLQPEASESSAIEPA
Specificity	Detects endogenous Rep1 and in transfected cells by Western blot.

### ADDITIONAL INFORMATION

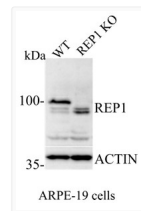
Note STRICTLY FOR FURTHER SCIENTIFIC RESEARCH USE ONLY (RUO). MUST NOT TO BE USED IN DIAGNOSTIC OR THERAPEUTIC APPLICATIONS.



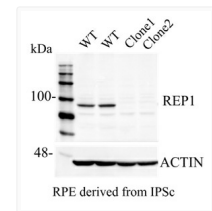
Anti CHM Goat Polyclonal antibody western blot STJ140142



Anti CHM Goat Polyclonal antibody western blot STJ140142



Anti CHM Goat Polyclonal antibody western blot STJ140142



Anti CHM Goat Polyclonal antibody western blot rpe STJ140142