

Anti-SNCG antibody (80aa C-Term) (STJ140141)

GENERAL INFORMATION

| | |
|---------------|---|
| Product Type | Primary antibodies |
| Applications | WB |
| Host / Source | Goat |
| Reactivity | Human/Mouse/Rat/Bovine/Canine/Chicken/Avian/Donkey/Feline/Goat/Guinea Pig/Hamster/Horse/Porcine/Rabbit/Sheep/Simian |

PRODUCT PROPERTIES

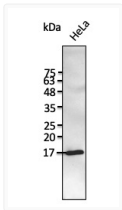
| | |
|---------------------|--|
| Clonality | Polyclonal |
| Concentration | 3 mg/mL |
| Conjugation | Unconjugated |
| Purification | This antibody is epitope-affinity purified from goat antiserum. |
| Dilution Range | WB 1:500-1:5000 |
| Formulation | PBS, 20% Glycerol and 0.05% Sodium Azide. |
| Isotype | IgG |
| Storage Instruction | For continuous use, store at 2-8 C for one-two days. For extended storage, store in -20 C freezer. Working dilution samples should be discarded if not used within 12 hours. |

TARGET INFORMATION

| | |
|--------------------|--|
| Gene ID | 6623 |
| Gene Symbol | SNCG |
| UniProt ID | SYUG_HUMAN |
| Immunogen Region | 80aa C-Term |
| Immunogen Sequence | SREEEAENIAVTSGVVRKED REEEAENIAVTSGVVRKEDL EEEAENIAVTSGVVRKEDLR |
| Specificity | Detects endogenous levels of SNCG by Western blot. This Ab is specific for SNCG and does not recognize SNCA and SNCB proteins. |

ADDITIONAL INFORMATION

Note STRICTLY FOR FURTHER SCIENTIFIC RESEARCH USE ONLY (RUO). MUST NOT TO BE USED IN DIAGNOSTIC OR THERAPEUTIC APPLICATIONS.



Anti SNCG Goat Polyclonal antibody western blot
hela STJ140141