

## Anti-LMNA antibody (620aa C-term) (STJ140138)

### GENERAL INFORMATION

Product Type	Primary antibodies
Applications	WB/IF
Host / Source	Goat
Reactivity	Human/Mouse/Rat/Bovine/Canine/Chicken/Avian/Donkey/Feline/Goat/Guinea Pig/Hamster/Horse/Porcine/Rabbit/Sheep/Simian

### PRODUCT PROPERTIES

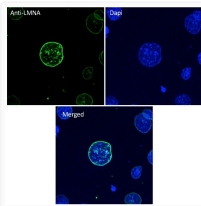
Clonality	Polyclonal
Concentration	3 mg/mL
Conjugation	Unconjugated
Purification	This antibody is epitope-affinity purified from goat antiserum.
Dilution Range	WB 1:500-1:5000 IF 1:100-1:1000
Formulation	PBS, 20% Glycerol and 0.05% Sodium Azide.
Isotype	IgG
Storage Instruction	For continuous use, store at 2-8 C for one-two days. For extended storage, store in-20 C freezer. Working dilution samples should be discarded if not used within 12 hours.

### TARGET INFORMATION

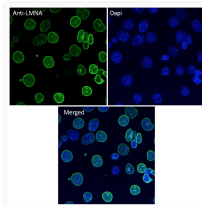
Gene ID	<a href="#">4000</a>
Gene Symbol	<a href="#">LMNA</a>
UniProt ID	<a href="#">LMNA_HUMAN</a>
Immunogen Region	620aa C-term
Immunogen Sequence	SASSVTVTRSYSRVGGSGGG ASSVTVTRSYSRVGGSGGGS SSVTVTRSYSRVGGSGGGSF
Specificity	Detects a band of 65-70 kDa by Western blot in whole cell lysates.

### ADDITIONAL INFORMATION

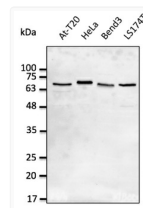
Note STRICTLY FOR FURTHER SCIENTIFIC RESEARCH USE ONLY (RUO). MUST NOT TO BE USED IN DIAGNOSTIC OR THERAPEUTIC APPLICATIONS.



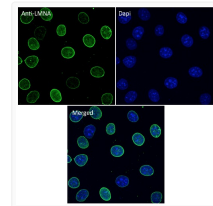
Anti LMNA Goat Polyclonal antibody immunofluorescence STJ140138



Anti LMNA Goat Polyclonal antibody immunofluorescence STJ140138



Anti LMNA Goat Polyclonal antibody western blot hela STJ140138



Anti LMNA Goat Polyclonal antibody immunofluorescence cos7 STJ140138