

Anti-RAB38 antibody (110aa C-Term) (STJ140135)

GENERAL INFORMATION

Product Type	Primary antibodies
Applications	WB
Host / Source	Goat
Reactivity	Human/Mouse/Rat/Bovine/Canine/Chicken/Avian/Donkey/Feline/Goat/Guinea Pig/Hamster/Horse/Porcine/Rabbit/Sheep/Simian

PRODUCT PROPERTIES

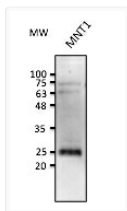
Clonality	Polyclonal
Concentration	4 mg/mL
Conjugation	Unconjugated
Purification	This antibody is epitope-affinity purified from goat antiserum.
Dilution Range	WB 1:500-1:5000
Formulation	PBS, 20% Glycerol and 0.05% Sodium Azide.
Isotype	IgG
Storage Instruction	For continuous use, store at 2-8 C for one-two days. For extended storage, store in-20 C freezer. Working dilution samples should be discarded if not used within 12 hours.

TARGET INFORMATION

Gene ID	23682
Gene Symbol	RAB38
UniProt ID	RAB38_HUMAN
Immunogen Region	110aa C-Term
Immunogen Sequence	MDSKLTLPNGKPVSVVLLAN DSKLTLPNGKPVSVVLLANK SKLTLPNGKPVSVVLLANKC KLTLPNGKPVSVVLLANKCD LTLPNGKPVSVVLLANKCDQ TLPNGKPVSVVLLANKCDQG
Specificity	Detects endogenous levels of Rab38 by Western blot.

ADDITIONAL INFORMATION

Note STRICTLY FOR FURTHER SCIENTIFIC RESEARCH USE ONLY (RUO). MUST NOT TO BE USED IN DIAGNOSTIC OR THERAPEUTIC APPLICATIONS.



Anti RAB38 Goat Polyclonal antibody western blot
STJ140135