

Anti-CD2 antibody (300aa C-Term) (STJ140134)

GENERAL INFORMATION

Product Type	Primary antibodies
Applications	WB
Host / Source	Goat
Reactivity	Human/Mouse/Rat/Bovine/Canine/Chicken/Avian/Donkey/Feline/Goat/Guinea Pig/Hamster/Horse/Porcine/Rabbit/Sheep/Simian

PRODUCT PROPERTIES

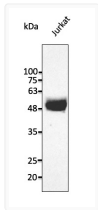
Clonality	Polyclonal
Concentration	4 mg/mL
Conjugation	Unconjugated
Purification	This antibody is epitope-affinity purified from goat antiserum.
Dilution Range	WB 1:500-1:5000
Formulation	PBS, 20% Glycerol and 0.05% Sodium Azide.
Isotype	IgG
Storage Instruction	For continuous use, store at 2-8 C for one-two days. For extended storage, store in -20 C freezer. Working dilution samples should be discarded if not used within 12 hours.

TARGET INFORMATION

Gene ID	914
Gene Symbol	CD2
UniProt ID	CD2_HUMAN
Immunogen Region	300aa C-Term
Immunogen Sequence	MHRVQHQPQKRPPAPSGTQV HRVQHQPQKRPPAPSGTQVH RVQHQPQKRPPAPSGTQVHQ
Specificity	Detects endogenous levels of CD2 by Western blot.

ADDITIONAL INFORMATION

Note STRICTLY FOR FURTHER SCIENTIFIC RESEARCH USE ONLY (RUO). MUST NOT TO BE USED IN DIAGNOSTIC OR THERAPEUTIC APPLICATIONS.



Anti CD2 Goat Polyclonal antibody western blot
 STJ140134