

Anti-YFP antibody (STJ140118)

GENERAL INFORMATION

Product Type	Primary antibodies
Applications	WB/IF/IHC-P/IHC-F/IEM
Host / Source	Goat
Reactivity	YFP/GFP/EGFP/Venus

PRODUCT PROPERTIES

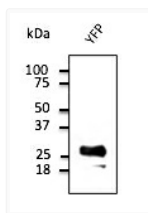
Clonality	Polyclonal
Concentration	3 mg/mL
Conjugation	Unconjugated
Purification	This antibody is epitope-affinity purified from goat antiserum.
Dilution Range	WB 1:500-1:2000 IHC-F 1:50-1:1000 IHC-P 1:50-1:1000 IF 1:50-1:1000 IEM 1:50-1:1000
Formulation	PBS, 20% Glycerol and 0.05% Sodium Azide.
Isotype	IgG
Storage Instruction	For continuous use, store at 2-8 C for one-two days. For extended storage, store in-20 C freezer. Working dilution samples should be discarded if not used within 12 hours.

TARGET INFORMATION

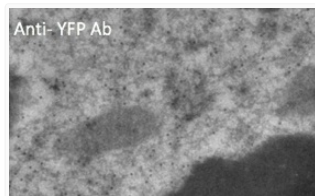
Specificity	In 293HEK cells transfected with cds plasmid detects a band of 27 kDa by Western blot. This antibody also recognizes GFP and does not recognize mCherry/red fluorescent protein.
-------------	--

ADDITIONAL INFORMATION

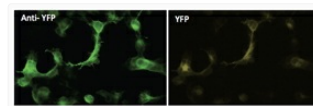
Note	STRICTLY FOR FURTHER SCIENTIFIC RESEARCH USE ONLY (RUO). MUST NOT TO BE USED IN DIAGNOSTIC OR THERAPEUTIC APPLICATIONS.
------	---



Anti YFP Goat Polyclonal antibody western blot hek293 STJ140118



Anti YFP Goat Polyclonal antibody immunoelectron microscopy STJ140118



Anti YFP Goat Polyclonal antibody immunofluorescence hek293 STJ140118