

## Anti-ERBB2 antibody (1177aa C-Term) (STJ140115)

### GENERAL INFORMATION

Product Type	Primary antibodies
Applications	WB/IHC-P/IHC-F
Host / Source	Goat
Reactivity	Human/Mouse/Rat/Bovine/Canine/Chicken/Avian/Donkey/Feline/Goat/Guinea Pig/Hamster/Horse/Porcine/Rabbit/Sheep/Simian

### PRODUCT PROPERTIES

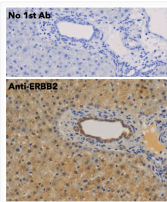
Clonality	Polyclonal
Concentration	3 mg/mL
Conjugation	Unconjugated
Purification	This antibody is epitope-affinity purified from goat antiserum.
Dilution Range	WB 1:500-1:5000 IHC-F 1:250-1:1000 IHC-P 1:250-1:1000
Formulation	PBS, 20% Glycerol and 0.05% Sodium Azide.
Isotype	IgG
Storage Instruction	For continuous use, store at 2-8 C for one-two days. For extended storage, store in -20 C freezer. Working dilution samples should be discarded if not used within 12 hours.

### TARGET INFORMATION

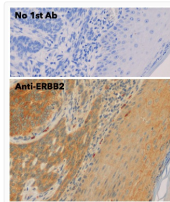
Gene ID	<a href="#">2064</a>
Gene Symbol	<a href="#">ERBB2</a>
UniProt ID	<a href="#">ERBB2_HUMAN</a>
Immunogen Region	1177aa C-Term
Immunogen Sequence	MPHPPPAFSPAFDNLYYWDQ PHPPPAFSPAFDNLYYWDQD HPPPAFSPAFDNLYYWDQDP
Specificity	Detects endogenous levels of ERBB2 by Western blot.

### ADDITIONAL INFORMATION

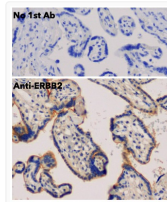
Note STRICTLY FOR FURTHER SCIENTIFIC RESEARCH USE ONLY (RUO). MUST NOT TO BE USED IN DIAGNOSTIC OR THERAPEUTIC APPLICATIONS.



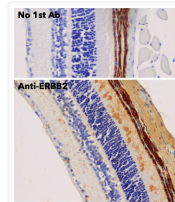
Anti ERBB2 Goat Polyclonal antibody immunohistochemistry mouse liver STJ140115



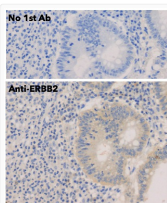
Anti ERBB2 Goat Polyclonal antibody immunohistochemistry human STJ140115



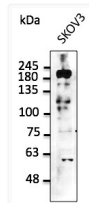
Anti ERBB2 Goat Polyclonal antibody immunohistochemistry human STJ140115



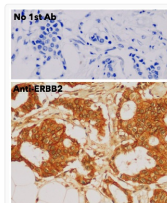
Anti ERBB2 Goat Polyclonal antibody immunohistochemistry rat STJ140115



Anti ERBB2 Goat Polyclonal antibody immunohistochemistry human STJ140115



Anti ERBB2 Goat Polyclonal antibody western blot SKOV3 STJ140115



Anti ERBB2 Goat Polyclonal antibody immunohistochemistry human STJ140115