

Anti-RYMV P1 antibody (55aa to N-terminal) (STJ140101)

GENERAL INFORMATION

Product Type	Primary antibodies
Applications	WB
Host / Source	Goat
Reactivity	P1 from rice yellow mottle virus

PRODUCT PROPERTIES

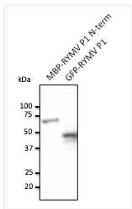
Clonality	Polyclonal
Concentration	3 mg/mL
Conjugation	Unconjugated
Purification	This antibody is epitope-affinity purified from goat antiserum.
Dilution Range	WB 1:500-1:2000
Formulation	PBS, 20% Glycerol and 0.05% Sodium Azide.
Isotype	IgG
Storage Instruction	For continuous use, store at 2-8 C for one-two days. For extended storage, store in -20 C freezer. Working dilution samples should be discarded if not used within 12 hours.

TARGET INFORMATION

Immunogen Region	55aa to N-terminal
Immunogen Sequence	MTRLEVLIRPTEQTVAKAIA TRLEVLIRPTEQTVAKAIAV RLEVLIRPTEQTVAKAIAVG
Specificity	Detects RYMV P1 full length recombinant fusion protein GFP-P1 expressed in transfected mammalian cells.

ADDITIONAL INFORMATION

Note STRICTLY FOR FURTHER SCIENTIFIC RESEARCH USE ONLY (RUO). MUST NOT TO BE USED IN DIAGNOSTIC OR THERAPEUTIC APPLICATIONS.



Anti RYMV P1 Goat Polyclonal antibody western blot hek293 STJ140101