

Anti-Mup20 antibody (STJ140098)

GENERAL INFORMATION

Product Type	Primary antibodies
Applications	WB
Host / Source	Goat
Reactivity	Mouse

PRODUCT PROPERTIES

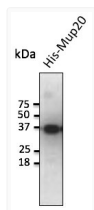
Clonality	Polyclonal
Concentration	3 mg/mL
Conjugation	Unconjugated
Purification	This antibody is epitope-affinity purified from goat antiserum.
Dilution Range	WB 1:500-1:2000
Formulation	PBS, 20% Glycerol and 0.05% Sodium Azide.
Isotype	IgG
Storage Instruction	For continuous use, store at 2-8 C for one-two days. For extended storage, store in -20 C freezer. Working dilution samples should be discarded if not used within 12 hours.

TARGET INFORMATION

Immunogen Sequence	MKLLVLLLCLGLTLCVHAE KLLVLLLCLGLTLCVHAE LLVLLLCLGLTLCVHAEA LVLLLCLGLTLCVHAEAS VLLLCLGLTLCVHAEASS LLLCLGLTLCVHAEASSM LLCLGLTLCVHAEASSME LCLGLTLCVHAEASSMER CLGLTLCVHAEASSMERN LGLTLCVHAEASSMERNF
Specificity	Detects the recombinant protein Mup20 by Western blot.

ADDITIONAL INFORMATION

Note STRICTLY FOR FURTHER SCIENTIFIC RESEARCH USE ONLY (RUO). MUST NOT TO BE USED IN DIAGNOSTIC OR THERAPEUTIC APPLICATIONS.



Anti Mup20 Goat Polyclonal antibody western blot
 STJ140098