

Anti-STX6 antibody (100aa N-Term) (STJ140096)

GENERAL INFORMATION

Product Type	Primary antibodies
Applications	WB
Host / Source	Goat
Reactivity	Human/Mouse/Rat/Bovine/Canine/Chicken/Avian/Donkey/Feline/Goat/Guinea Pig/Hamster/Horse/Porcine/Rabbit/Sheep/Simian

PRODUCT PROPERTIES

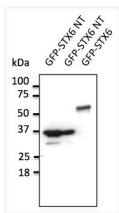
Clonality	Polyclonal
Concentration	3 mg/mL
Conjugation	Unconjugated
Purification	This antibody is epitope-affinity purified from goat antiserum.
Dilution Range	WB 1:500-1:2000
Formulation	PBS, 20% Glycerol and 0.05% Sodium Azide.
Isotype	IgG
Storage Instruction	For continuous use, store at 2-8 C for one-two days. For extended storage, store in -20 C freezer. Working dilution samples should be discarded if not used within 12 hours.

TARGET INFORMATION

Gene ID	10228
Gene Symbol	STX6
UniProt ID	STX6_HUMAN
Immunogen Region	100aa N-Term
Immunogen Sequence	MSMEDPFFVVKGEVQKAVNT SMEDPFFVVKGEVQKAVNTA MEDPFFVVKGEVQKAVNTAQ EDPFFVVKGEVQKAVNTAQG DPFVVKGEVQKAVNTAQGL
Specificity	Detects STX6 by Western blot in transfected cells with GFP-STX6.

ADDITIONAL INFORMATION

Note STRICTLY FOR FURTHER SCIENTIFIC RESEARCH USE ONLY (RUO). MUST NOT TO BE USED IN DIAGNOSTIC OR THERAPEUTIC APPLICATIONS.



Anti STX6 Goat Polyclonal antibody western blot
STJ140096