

## Anti-ALB antibody (Full Length) (STJ140089)

### GENERAL INFORMATION

Product Type	Primary antibodies
Applications	WB
Host / Source	Goat
Reactivity	Human/Mouse/Rat/Bovine/Canine/Chicken/Avian/Donkey/Feline/Goat/Guinea Pig/Hamster/Horse/Porcine/Rabbit/Sheep/Simian

### PRODUCT PROPERTIES

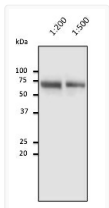
Clonality	Polyclonal
Concentration	3 mg/mL
Conjugation	Unconjugated
Purification	This antibody is epitope-affinity purified from goat antiserum.
Dilution Range	WB 1:500-1:5000
Formulation	PBS, 20% Glycerol and 0.05% Sodium Azide.
Isotype	IgG
Storage Instruction	For continuous use, store at 2-8 C for one-two days. For extended storage, store in -20 C freezer. Working dilution samples should be discarded if not used within 12 hours.

### TARGET INFORMATION

Gene ID	<a href="#">213</a>
Gene Symbol	<a href="#">ALB</a>
UniProt ID	<a href="#">ALBU_HUMAN</a>
Immunogen Region	Full Length
Immunogen Sequence	MKWVTFISLLLLFSSAYSRG KWVTFISLLLLFSSAYSRGV WVFISLLLLFSSAYSRGVF VTFISLLLLFSSAYSRGVFR TFISLLLLFSSAYSRGVFRR FISLLLLFSSAYSRGVFRRD ISLLLLFSSAYSRGVFRRDT SLLLLFSSAYSRGVFRRDTH LLLFSSAYSRGVFRRDTHK LLLFSSAYSRGVFRRDTHKS LLFSSAYSRGVFRRDTHKSE LFSSAYSRGVFRRDTHKSE
Specificity	Using serum samples detects a band around 66 kDa by Western blot.

### ADDITIONAL INFORMATION

Note STRICTLY FOR FURTHER SCIENTIFIC RESEARCH USE ONLY (RUO). MUST NOT TO BE USED IN DIAGNOSTIC OR THERAPEUTIC APPLICATIONS.



Anti ALB Goat Polyclonal antibody western blot human STJ140089