

## Anti-RAB35 antibody (110aa C-Term) (STJ140084)

### GENERAL INFORMATION

Product Type	Primary antibodies
Applications	WB
Host / Source	Goat
Reactivity	Human/Mouse/Rat/Bovine/Canine/Chicken/Avian/Donkey/Feline/Goat/Guinea Pig/Hamster/Horse/Porcine/Rabbit/Sheep/Simian

### PRODUCT PROPERTIES

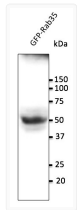
Clonality	Polyclonal
Concentration	3 mg/mL
Conjugation	Unconjugated
Purification	This antibody is epitope-affinity purified from goat antiserum.
Dilution Range	WB 1:250-1:2000
Formulation	PBS, 20% Glycerol and 0.05% Sodium Azide.
Isotype	IgG
Storage Instruction	For continuous use, store at 2-8 C for one-two days. For extended storage, store in -20 C freezer. Working dilution samples should be discarded if not used within 12 hours.

### TARGET INFORMATION

Gene ID	<a href="#">11021</a>
Gene Symbol	<a href="#">RAB35</a>
UniProt ID	<a href="#">RAB35_HUMAN</a>
Immunogen Region	110aa C-Term
Immunogen Sequence	MNQNCDDVCRILVGKNKDDP NQNCDDVCRILVGKNKDDPE QNCDDVCRILVGKNKDDPER NCDDVCRILVGKNKDDPERK CDDVCRILVGKNKDDPERKV
Specificity	Detects Rab35 by Western blot in transfected cells with GFP-Rab35.

### ADDITIONAL INFORMATION

Note STRICTLY FOR FURTHER SCIENTIFIC RESEARCH USE ONLY (RUO). MUST NOT TO BE USED IN DIAGNOSTIC OR THERAPEUTIC APPLICATIONS.



Anti RAB35 Goat Polyclonal antibody western blot  
hek293 STJ140084