

Anti-PECAM1 antibody (690aa C-Term) (STJ140082)

GENERAL INFORMATION

Product Type	Primary antibodies
Applications	WB/IHC-P/IHC-F
Host / Source	Goat
Reactivity	Human/Mouse/Rat/Bovine/Canine/Chicken/Avian/Donkey/Feline/Goat/Guinea Pig/Hamster/Horse/Porcine/Rabbit/Sheep/Simian

PRODUCT PROPERTIES

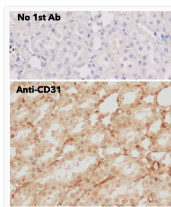
Clonality	Polyclonal
Concentration	3 mg/mL
Conjugation	Unconjugated
Purification	This antibody is epitope-affinity purified from goat antiserum.
Dilution Range	WB 1:500-1:2000 IHC-F 1:250-1:1000 IHC-P 1:250-1:1000 Martins FO Sacramento JF Olea E et al. Antioxidants-Basel 2021 Aug PMID: 34439481 Rodrigues T Borges P Mar L et al. Pharmacol Res 2020 Sep. PMID: 32942016 Rodrigues TDA PhD The
Formulation	PBS, 20% Glycerol and 0.05% Sodium Azide.
Isotype	IgG
Storage Instruction	For continuous use, store at 2-8 C for one-two days. For extended storage, store in-20 C freezer. Working dilution samples should be discarded if not used within 12 hours.

TARGET INFORMATION

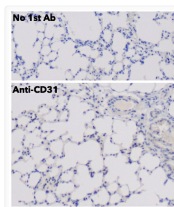
Gene ID	5175
Gene Symbol	PECAM1
UniProt ID	PECA1_HUMAN
Immunogen Region	690aa C-Term
Immunogen Sequence	TEVQVSSAESHKDLGKKDTE EVQVSSAESHKDLGKKDTET VQVSSAESHKDLGKKDTETV
Specificity	Using PBM cell lysates detects a 130-140 kDa band by Western blot.

ADDITIONAL INFORMATION

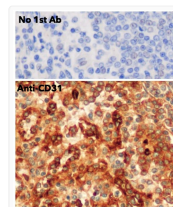
Note STRICTLY FOR FURTHER SCIENTIFIC RESEARCH USE ONLY (RUO). MUST NOT TO BE USED IN DIAGNOSTIC OR THERAPEUTIC APPLICATIONS.



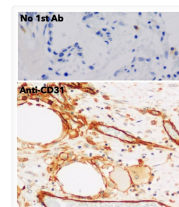
Anti PECAM1 Goat Polyclonal antibody immunohistochemistry mouse kidney STJ140082



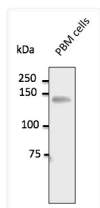
Anti PECAM1 Goat Polyclonal antibody immunohistochemistry mouse STJ140082



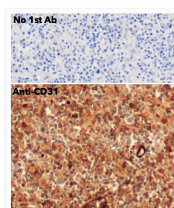
Anti PECAM1 Goat Polyclonal antibody immunohistochemistry mouse STJ140082



Anti PECAM1 Goat Polyclonal antibody immunohistochemistry human STJ140082



Anti PECAM1 Goat Polyclonal antibody western blot STJ140082



Anti PECAM1 Goat Polyclonal antibody immunohistochemistry human STJ140082