

## Anti-Pan-RAB8 antibody (107aa C-Term) (STJ140064)

### GENERAL INFORMATION

Product Type	Primary antibodies
Applications	WB/IF/IHC-P/IHC-F
Host / Source	Goat
Reactivity	Human/Mouse/Rat/Bovine/Canine/Chicken/Avian/Donkey/Feline/Goat/Guinea Pig/Hamster/Horse/Porcine/Rabbit/Sheep/Simian

### PRODUCT PROPERTIES

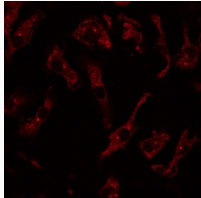
Clonality	Polyclonal
Concentration	3 mg/mL
Conjugation	Unconjugated
Purification	This antibody is epitope-affinity purified from goat antiserum.
Dilution Range	WB 1:250-1:1000 IHC-F 1:250-1:1500 IHC-P 1:250-1:1500 IF 1:50-1:250 ELISA ND Schiweck J Murk K Ledderose J et al. Nature Communications 2021 PMID: 33674568 Schiweck J Murk K Ledderose J et al. bioRxiv 2020
Formulation	PBS, 20% Glycerol and 0.05% Sodium Azide.
Isotype	IgG
Storage Instruction	For continuous use, store at 2-8 C for one-two days. For extended storage, store in -20 C freezer. Working dilution samples should be discarded if not used within 12 hours.

### TARGET INFORMATION

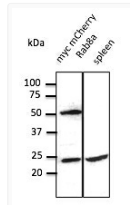
Gene ID	<a href="#">4218</a> <a href="#">51762</a>
Gene Symbol	<a href="#">RAB8A</a> <a href="#">RAB8B</a>
UniProt ID	<a href="#">RAB8A_HUMAN</a> <a href="#">RAB8B_HUMAN</a>
Immunogen Region	107aa C-Term
Specificity	Detects total Rab8 protein in the following human, rat and mouse whole cell lysates and transfected cells with GFP-Rab8a and GFP-Rab8b cds by Western blot.

### ADDITIONAL INFORMATION

Note STRICTLY FOR FURTHER SCIENTIFIC RESEARCH USE ONLY (RUO). MUST NOT TO BE USED IN DIAGNOSTIC OR THERAPEUTIC APPLICATIONS.



Anti Pan RAB8 Goat Polyclonal antibody immunofluorescence STJ140064



Anti Pan RAB8 Goat Polyclonal antibody western blot STJ140064