

## Anti-HIF1A antibody (780aa C-Term) (STJ140040)

### GENERAL INFORMATION

Product Type	Primary antibodies
Applications	WB
Host / Source	Goat
Reactivity	Human/Mouse/Rat/Bovine/Canine/Chicken/Avian/Donkey/Feline/Goat/Guinea Pig/Hamster/Horse/Porcine/Rabbit/Sheep/Simian

### PRODUCT PROPERTIES

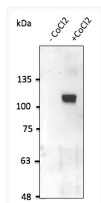
Clonality	Polyclonal
Concentration	3 mg/mL
Conjugation	Unconjugated
Purification	This antibody is epitope-affinity purified from goat antiserum.
Dilution Range	WB 1:500-1:2000 Ferreira JV Soares AR Ramalho J et al. Sci Adv 2022 Mar PMID: 35333565 Martins F Sacramento JF Olea E et al. Antioxidants-Basel 2021 Aug PMID: 34439481 Ferreira JV Rosa Soares A Ramalho JS et al. PLoS One. 2019 Oct. PMID:
Formulation	PBS, 20% Glycerol and 0.05% Sodium Azide.
Isotype	IgG
Storage Instruction	For continuous use, store at 2-8 C for one-two days. For extended storage, store in -20 C freezer. Working dilution samples should be discarded if not used within 12 hours.

### TARGET INFORMATION

Gene ID	<a href="#">3091</a>
Gene Symbol	<a href="#">HIF1A</a>
UniProt ID	<a href="#">HIF1A_HUMAN</a>
Immunogen Region	780aa C-Term
Immunogen Sequence	LLGQSMDESGLPQLTSYDCE LGQSMDESGLPQLTSYDCEV GQSMDESGLPQLTSYDCEVN
Specificity	Detects HIF1a in transfected cells and a band of approximately 120 kDa by Western blot in cell lysates.

### ADDITIONAL INFORMATION

Note STRICTLY FOR FURTHER SCIENTIFIC RESEARCH USE ONLY (RUO). MUST NOT TO BE USED IN DIAGNOSTIC OR THERAPEUTIC APPLICATIONS.



Anti HIF1A Goat Polyclonal antibody western blot  
 STJ140040