

Anti-Chaperonin GroEL protein antibody (400aa C-Term) (STJ140039)

GENERAL INFORMATION

Product Type	Primary antibodies
Applications	WB
Host / Source	Goat
Reactivity	Burkholderia/Pseudomonas

PRODUCT PROPERTIES

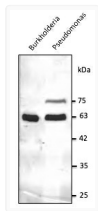
Clonality	Polyclonal
Concentration	3 mg/mL
Conjugation	Unconjugated
Purification	This antibody is epitope-affinity purified from goat antiserum.
Dilution Range	WB 1:500-1:5000
Formulation	PBS, 20% Glycerol and 0.05% Sodium Azide.
Isotype	IgG
Storage Instruction	For continuous use, store at 2-8 C for one-two days. For extended storage, store in -20 C freezer. Working dilution samples should be discarded if not used within 12 hours.

TARGET INFORMATION

Immunogen Region	400aa C-Term
Immunogen Sequence	DALHATRAAVEEGIVAGGGV ALHATRAAVEEGIVAGGGVA LHATRAAVEEGIVAGGGVAL HATRAAVEEGIVAGGGVALI ATRAAVEEGIVAGGGVALIR
Specificity	The Ab recognizes the endogenous protein in Burkholderia and Pseudomonas by Western blot.

ADDITIONAL INFORMATION

Note STRICTLY FOR FURTHER SCIENTIFIC RESEARCH USE ONLY (RUO). MUST NOT TO BE USED IN DIAGNOSTIC OR THERAPEUTIC APPLICATIONS.



Anti Chaperonin GroEL protein Goat Polyclonal antibody western blot STJ140039