

Anti-GJA1 antibody (230aa C-Term) (STJ140031)

GENERAL INFORMATION

| | |
|---------------|---|
| Product Type | Primary antibodies |
| Applications | WB/IF/IHC-P/IHC-F |
| Host / Source | Goat |
| Reactivity | Human/Mouse/Rat/Bovine/Canine/Chicken/Avian/Donkey/Feline/Goat/Guinea Pig/Hamster/Horse/Porcine/Rabbit/Sheep/Simian |

PRODUCT PROPERTIES

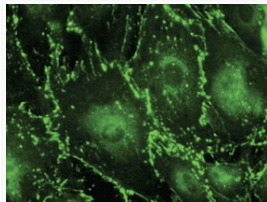
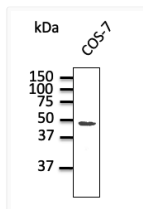
| | |
|---------------------|--|
| Clonality | Polyclonal |
| Concentration | 4 mg/mL |
| Conjugation | Unconjugated |
| Purification | This antibody is epitope-affinity purified from goat antiserum. |
| Dilution Range | WB 1:500-1:2000 IF 1:50-1:250 IHC-P 1:250-1:800 IHC-F 1:250-1:800 Xing J Wang H Chen L et al. Int Immunopharmacol 2022 PMID: 36442284 Yu X He W Xie J et al. J Cardiovasc Electrophysiol. 2018 Dec PMID: 30516302 |
| Formulation | PBS, 20% Glycerol and 0.05% Sodium Azide. |
| Isotype | IgG |
| Storage Instruction | For continuous use, store at 2-8 C for one-two days. For extended storage, store in-20 C freezer. Working dilution samples should be discarded if not used within 12 hours. |

TARGET INFORMATION

| | |
|--------------------|---|
| Gene ID | 2697 |
| Gene Symbol | GJA1 |
| UniProt ID | CXA1_HUMAN |
| Immunogen Region | 230aa C-Term |
| Immunogen Sequence | VKDRVKGRSDPYHATTGPLS KDRVKGRSDPYHATTGPLSP DRVKGRSDPYHATTGPLSPS RVKGRSDPYHATTGPLSPSK VKGRSDPYHATTGPLSPSKD KGRSDPYHATTGPLSPSKDC GRSDPYHATTGPLSPSKDCG RSDPYHATTGPLSPSKDCGS |
| Specificity | Detects endogenous levels of total connexin 43. |

ADDITIONAL INFORMATION

Note STRICTLY FOR FURTHER SCIENTIFIC RESEARCH USE ONLY (RUO). MUST NOT TO BE USED IN DIAGNOSTIC OR THERAPEUTIC APPLICATIONS.



Anti GJA1 Goat Polyclonal antibody western blot STJ140031 Anti GJA1 Goat Polyclonal antibody immunofluorescence rpe STJ140031