

## Anti-CDH2 antibody (850aa to C-Term) (STJ140028)

### GENERAL INFORMATION

Product Type	Primary antibodies
Applications	WB/IF
Host / Source	Goat
Reactivity	Human/Mouse/Rat/Bovine/Canine/Chicken/Avian/Donkey/Feline/Goat/Guinea Pig/Hamster/Horse/Porcine/Rabbit/Sheep/Simian

### PRODUCT PROPERTIES

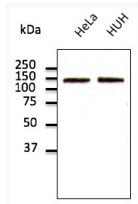
Clonality	Polyclonal
Concentration	3 mg/mL
Conjugation	Unconjugated
Purification	This antibody is epitope-affinity purified from goat antiserum.
Dilution Range	WB 1:500-1:2000 IF 1:25-1:250
Formulation	PBS, 20% Glycerol and 0.05% Sodium Azide.
Isotype	IgG
Storage Instruction	For continuous use, store at 2-8 C for one-two days. For extended storage, store in-20 C freezer. Working dilution samples should be discarded if not used within 12 hours.

### TARGET INFORMATION

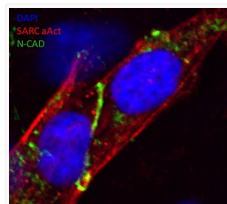
Gene ID	<a href="#">1000</a>
Gene Symbol	<a href="#">CDH2</a>
UniProt ID	<a href="#">CADH2_HUMAN</a>
Immunogen Region	850aa to C-Term
Immunogen Sequence	VFDYEGSGSTAGLSSLNSSLNFDYEGSGSTAGLSSLNSSLNFDYEGSGSTAGLSSLNSSLN
Specificity	Detects endogenous levels of total N-cadherin protein by Western blot in the whole cell lysates (COS-7, HeLa, HUH and Hepa-6).

### ADDITIONAL INFORMATION

Note STRICTLY FOR FURTHER SCIENTIFIC RESEARCH USE ONLY (RUO). MUST NOT TO BE USED IN DIAGNOSTIC OR THERAPEUTIC APPLICATIONS.



Anti CDH2 Goat Polyclonal antibody western blot hela STJ140028



Anti CDH2 Goat Polyclonal antibody immunofluorescence human STJ140028