

Anti-CD4 antibody (50-235aa ECD) (STJ140023)

GENERAL INFORMATION

Product Type	Primary antibodies
Applications	WB/IHC-P/IHC-F
Host / Source	Goat
Reactivity	Human/Mouse/Rat/Bovine/Canine/Chicken/Avian/Donkey/Goat/Guinea Pig/Hamster/Horse/Porcine/Rabbit/Sheep/Simian

PRODUCT PROPERTIES

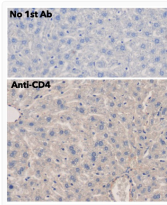
Clonality	Polyclonal
Concentration	3 mg/mL
Conjugation	Unconjugated
Purification	This antibody is epitope-affinity purified from goat antiserum.
Dilution Range	WB 1:500-1:2000 IHC-F 1:250-1:1000 IHC-P 1:250-1:1000 Helsby MA Leader PM Fenn JR et al. BMC Cell Biol. 2014 Feb 14:15:6. PMID: 24528853
Formulation	PBS, 20% Glycerol and 0.05% Sodium Azide.
Isotype	IgG
Storage Instruction	For continuous use, store at 2-8 C for one-two days. For extended storage, store in-20 C freezer. Working dilution samples should be discarded if not used within 12 hours.

TARGET INFORMATION

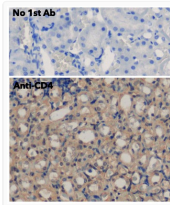
Gene ID	920
Gene Symbol	CD4
UniProt ID	CD4_HUMAN
Immunogen Region	50-235aa ECD
Immunogen Sequence	FHWKNSNQIKILGNQGSFLT HWKNSNQIKILGNQGSFLT K WKNNSNQIKILGNQGSFLT KG KNSNQIKILGNQGSFLT K GP NSNQIKILGNQGSFLT K GP S SNQIKILGNQGSFLT K GP SK NQIKILGNQGSFLT K GP SK L QIKILGNQGSFLT K GP SK LN IKILGNQGSFLT K GP SK LND KILGNQGSFLT K GP SK LND R
Specificity	Using spleen lysate detects a 52 kDa band by Western blot.

ADDITIONAL INFORMATION

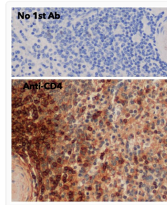
Note STRICTLY FOR FURTHER SCIENTIFIC RESEARCH USE ONLY (RUO). MUST NOT TO BE USED IN DIAGNOSTIC OR THERAPEUTIC APPLICATIONS.



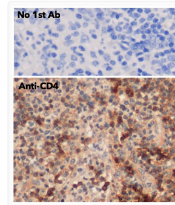
Anti CD4 Goat Polyclonal antibody immunohistochemistry mouse liver STJ140023



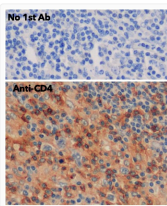
Anti CD4 Goat Polyclonal antibody immunohistochemistry mouse kidney STJ140023



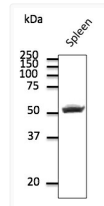
Anti CD4 Goat Polyclonal antibody immunohistochemistry mouse STJ140023



Anti CD4 Goat Polyclonal antibody immunohistochemistry human STJ140023



Anti CD4 Goat Polyclonal antibody immunohistochemistry human STJ140023



Anti CD4 Goat Polyclonal antibody western blot STJ140023