

## Anti-Cre Recombinase antibody (STJ140003)

### GENERAL INFORMATION

Product Type	Primary antibodies
Applications	WB
Host / Source	Goat
Reactivity	Bacteriophage P1

### PRODUCT PROPERTIES

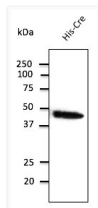
Clonality	Polyclonal
Concentration	3 mg/mL
Conjugation	Unconjugated
Purification	This antibody is epitope-affinity purified from goat antiserum.
Dilution Range	WB 1:500-1:2000
Formulation	PBS, 20% Glycerol and 0.05% Sodium Azide.
Isotype	IgG
Storage Instruction	For continuous use, store at 2-8 C for one-two days. For extended storage, store in -20 C freezer. Working dilution samples should be discarded if not used within 12 hours.

### TARGET INFORMATION

Immunogen Sequence	MSNLLTVHQNLPALPVDATS SNLLTVHQNLPALPVDATSD NLLTVHQNLPALPVDATSDE LLTVHQNLPALPVDATSDEV LTVHQNLPALPVDATSDEVR TVHQNLPALPVDATSDEVRK VHQNLPALPVDATSDEVRKN HQNLPALPVDATSDEVRKNL QNLPALPVDATSDEVRKNLM NLPALPVDATSDEVRKNLMD LPALPVDATSDEVRKNLMDM PALPVDATSDEVRKNLMDM
Specificity	In 293HEK cells transduced with Ad-Cre detects a band of 38 kDa by Western blot and gives a positive signal for the Cre recombinase protein.

### ADDITIONAL INFORMATION

Note	STRICTLY FOR FURTHER SCIENTIFIC RESEARCH USE ONLY (RUO). MUST NOT TO BE USED IN DIAGNOSTIC OR THERAPEUTIC APPLICATIONS.
------	---



Anti Cre Recombinase Goat Polyclonal antibody western blot hacat STJ140003