

Anti-MPO antibody (STJ13100487)

GENERAL INFORMATION

Product Type	Primary antibodies
Applications	IHC/WB
Host / Source	Rabbit
Reactivity	Human

PRODUCT PROPERTIES

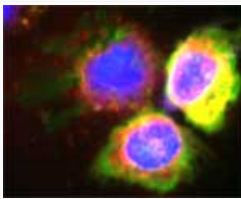
Clonality	Polyclonal
Conjugation	Unconjugated
Purification	IgG purified
Dilution Range	IHC, WB. A working concentration of 10-50 ug/ml is recommended. The optimal dilution should be determined by the end user. This antibody performs superbly in paraffin-embedded tissue sections fixed in formalin, frozen sections and cell cytopins.
Formulation	Lyophilised
Isotype	IgG
Storage Instruction	Maintain the lyophilised/reconstituted antibodies frozen at -20°C for long term storage and refrigerated at 2-8°C for a shorter term. When reconstituting, Glycerol (1:1) may be added for an additional stability. Avoid freeze and thaw cycles.

TARGET INFORMATION

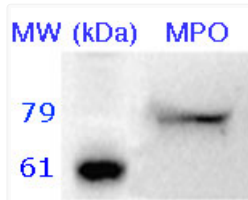
Gene ID	4353
Gene Symbol	MPO
UniProt ID	PERM_HUMAN
Specificity	Specific for MPO.

ADDITIONAL INFORMATION

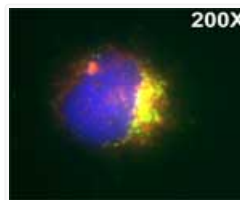
Note STRICTLY FOR FURTHER SCIENTIFIC RESEARCH USE ONLY (RUO). MUST NOT TO BE USED IN DIAGNOSTIC OR THERAPEUTIC APPLICATIONS.



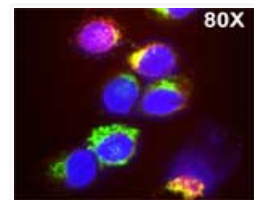
Confocal microscopy on isolated monocytes. MPO detected with Rabbit antibody to MPO; red; Hoechst: blue; MHC class II: green. Magnification: 200 X



10 ug of neutrophil lysate was separated by 12% SDS-PAGE. Proteins were transferred onto a PVDF membrane and blocked by incubation with PBS containing 2% skim milk and 0.02% Tween 20 for 30 min. Membranes were probed with Rabbit antibody to MPO (3 ug/ml) for 1 hr. Membranes were then probed with goat anti-rabbit antibody conjugated to alkaline phosphatase diluted 1:1000 and developed with ECF luminescence substrate (Amersham Biosciences).



Isolated monocytes were stained with LysoTrack red followed by staining with Rabbit antibody to MPO (3ug/ml) for 1 hour at room temperature, washed and followed by staining with goat anti-rabbit antibody conjugated to Alexa 488 (Green) for 1 hr. Mounting media (10% Glycerol in PBS) containing Hoechst 33258 1 ug/ml (Sigma-Aldrich) was used for nuclear counterstaining (Blue). Fluorescent cell staining was analysed by confocal microscopy using a BioRad Radiance 2100 confocal microscope. Magnification: 200X



Isolated monocytes were stained with LysoTrack red followed by staining with Rabbit antibody to MPO (3ug/ml) for 1 hour at room temperature, washed and followed by staining with goat anti-rabbit antibody conjugated to Alexa 488 (Green) for 1 hr. Mounting media (10% Glycerol in PBS) containing Hoechst 33258 1 ug/ml (Sigma-Aldrich) was used for nuclear counterstaining (Blue). Fluorescent cell staining was analysed by confocal microscopy using a BioRad Radiance 2100 confocal microscope. Magnification: 80X