

Anti-MAP2 antibody (350-400) (STJ13100172)

GENERAL INFORMATION

Product Type	Primary antibodies
Applications	IHC/WB
Host / Source	Rabbit
Reactivity	Rat/Mouse

PRODUCT PROPERTIES

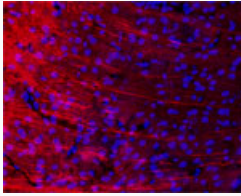
Clonality	Polyclonal
Conjugation	Unconjugated
Purification	IgG purified
Dilution Range	IHC, WB. A working concentration of 10-50 $\mu\text{g/ml}$ is recommended. The optimal concentration should be determined by the end user. Not yet tested in other applications.
Formulation	Lyophilised
Isotype	IgG
Storage Instruction	Maintain the lyophilised/reconstituted antibodies frozen at -20°C for long term storage and refrigerated at $2-8^{\circ}\text{C}$ for a shorter term. When reconstituting, Glycerol (1:1) may be added for an additional stability. Avoid freeze and thaw cycles.

TARGET INFORMATION

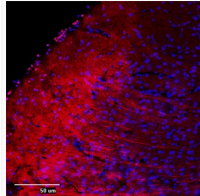
Gene ID	17756
Gene Symbol	Map2
UniProt ID	MTAP2_MOUSE
Immunogen Region	350-400
Specificity	Specific for MAP-2.

ADDITIONAL INFORMATION

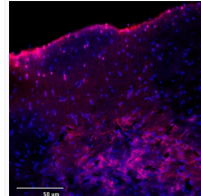
Note STRICTLY FOR FURTHER SCIENTIFIC RESEARCH USE ONLY (RUO). MUST NOT TO BE USED IN DIAGNOSTIC OR THERAPEUTIC APPLICATIONS.



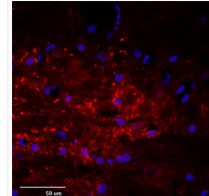
IF (confocal) on rat brain at a concentration of 30 $\mu\text{g/ml}$ using Rabbit antibody to MAP2 (STJ13100172), DAPI counterstained.



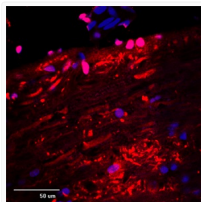
IF (confocal) on rat brain at a concentration of 30 $\mu\text{g/ml}$ using Rabbit antibody to MAP2 (STJ13100172), DAPI counterstained appearing in blue.



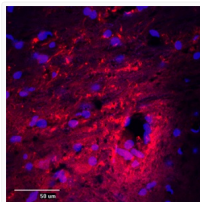
IF (confocal) on rat brain at a concentration of 30 $\mu\text{g/ml}$ using Rabbit antibody to MAP2 (STJ13100172), DAPI counterstained appearing in blue.



IF (confocal) on rat brain at a concentration of 30 $\mu\text{g/ml}$ using Rabbit antibody to MAP2 (STJ13100172), DAPI counterstained appearing in blue.



IF (confocal) on rat brain at a concentration of 30 $\mu\text{g/ml}$ using Rabbit antibody to MAP2 (STJ13100172), DAPI counterstained appearing in blue.



IF (confocal) on rat brain at a concentration of 30 $\mu\text{g/ml}$ using Rabbit antibody to MAP2 (STJ13100172), DAPI counterstained appearing in blue.