

Anti-GAPDH antibody (C-Term) (STJ13100141)

GENERAL INFORMATION

Product Type	Primary antibodies
Applications	IHC/WB
Host / Source	Sheep
Reactivity	Rat/Mouse/Human

PRODUCT PROPERTIES

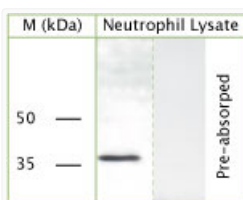
Clonality	Polyclonal
Conjugation	Unconjugated
Purification	IgG purified
Dilution Range	IHC, WB. A concentration of 10-50 μ g/ml is recommended. The optimal concentration should be determined by the end user. Not yet tested in other applications.
Formulation	Lyophilised
Isotype	IgG
Storage Instruction	Maintain the lyophilised/reconstituted antibodies frozen at -20°C for long term storage and refrigerated at 2-8°C for a shorter term. When reconstituting, Glycerol (1:1) may be added for an additional stability. Avoid freeze and thaw cycles.

TARGET INFORMATION

Gene ID	2597
Gene Symbol	GAPDH
UniProt ID	G3P_HUMAN
Immunogen Region	C-Term
Specificity	Specific for GAPDH.

ADDITIONAL INFORMATION

Note STRICTLY FOR FURTHER SCIENTIFIC RESEARCH USE ONLY (RUO). MUST NOT TO BE USED IN DIAGNOSTIC OR THERAPEUTIC APPLICATIONS.



WB on human neutrophil lysate using Sheep antibody to c-terminal of GAPDH (STJ13100141) at a concentration of 20 μ g/ml.