

## Anti-GAPDH antibody (STJ13100139)

### GENERAL INFORMATION

Product Type	Primary antibodies
Applications	IHC/WB
Host / Source	Rabbit
Reactivity	Rat/Mouse/Human/Marmoset

### PRODUCT PROPERTIES

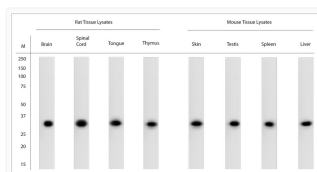
Clonality	Polyclonal
Conjugation	Unconjugated
Purification	IgG purified
Dilution Range	IHC, WB. A concentration of 1-5 $\mu$ g/ml is recommended. The optimal concentration should be determined by the end user. Not yet tested in other applications.
Formulation	Lyophilised
Isotype	IgG
Storage Instruction	Maintain the lyophilised/reconstituted antibodies frozen at -20°C for long term storage and refrigerated at 2-8°C for a shorter term. When reconstituting, Glycerol (1:1) may be added for an additional stability. Avoid freeze and thaw cycles.

### TARGET INFORMATION

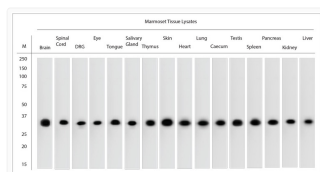
Gene ID	<a href="#">2597</a>
Gene Symbol	<a href="#">GAPDH</a>
UniProt ID	<a href="#">G3P_HUMAN</a>
Specificity	Specific for GAPDH.

### ADDITIONAL INFORMATION

Note **STRICTLY FOR FURTHER SCIENTIFIC RESEARCH USE ONLY (RUO). MUST NOT TO BE USED IN DIAGNOSTIC OR THERAPEUTIC APPLICATIONS.**



WB on rat and mouse tissue lysates. Lysates were prepared in Ripa buffer containing 1% Triton X-100, 1% SDS and 1% SDC. Blocking: 1% LFDm for 30 min at RT; primary antibody dilution 1:30000 incubated at 4C overnight.



WB on marmoset tissue lysates. Lysates were prepared in Ripa buffer containing 1% Triton X-100, 1% SDS and 1% SDC. Blocking: 1% LFDm for 30 min at RT; primary antibody dilution 1:20000 incubated at 4C overnight.