

Anti-Cathelicidin antibody [OSX12] (STJ13100093)

GENERAL INFORMATION

Product Type	Primary antibodies
Applications	IHC/IF/WB/FC
Host / Source	Mouse
Reactivity	Human

PRODUCT PROPERTIES

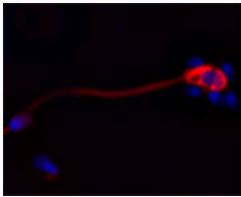
Clonality	Monoclonal
Conjugation	Unconjugated
Purification	IgG purified
Dilution Range	IHC, IF, WB, flow cytometry. Use at a concentration of 5-10 ug/ml. The optimal concentration should be determined by the end user. Not yet tested in other applications.
Formulation	Lyophilised
Isotype	IgG1k
Storage Instruction	Maintain the lyophilised/reconstituted antibodies frozen at -20°C for long term storage and refrigerated at 2-8°C for a shorter term. When reconstituting, Glycerol (1:1) may be added for an additional stability. Avoid freeze and thaw cycles.

TARGET INFORMATION

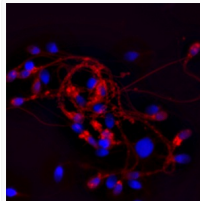
Gene ID	820
Gene Symbol	CAMP
UniProt ID	CAMP_HUMAN
Specificity	Specific for Cathelicidin antimicrobial peptide.

ADDITIONAL INFORMATION

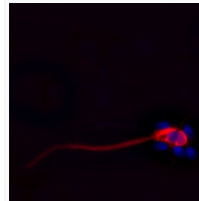
Note **STRICTLY FOR FURTHER SCIENTIFIC RESEARCH USE ONLY (RUO). MUST NOT TO BE USED IN DIAGNOSTIC OR THERAPEUTIC APPLICATIONS.**



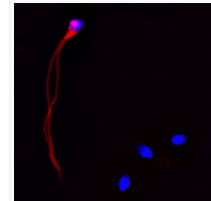
IF on ethanol-fixed human spermatozoid using Mouse monoclonal to Cathelicidin: OSX12 clone (STJ13100093) at a concentration of 10 ug/ml. DAPI counterstained appearing in blue.



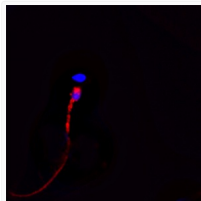
IF on ethanol-fixed human spermatozoid using Mouse monoclonal to Cathelicidin: OSX12 clone (STJ13100093) at a concentration of 10 ug/ml. DAPI counterstained appearing in blue.



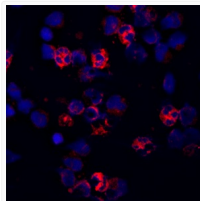
IF on ethanol-fixed human spermatozoid using Mouse monoclonal to Cathelicidin: OSX12 clone (STJ13100093) at a concentration of 10 ug/ml. DAPI counterstained appearing in blue.



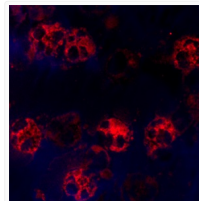
IF on ethanol-fixed human spermatozoid using Mouse monoclonal to Cathelicidin: OSX12 clone (STJ13100093) at a concentration of 10 ug/ml. DAPI counterstained appearing in blue.



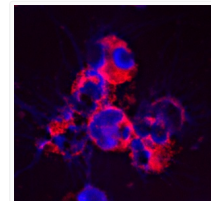
IF on ethanol-fixed human spermatozoid using Mouse monoclonal to Cathelicidin: OSX12 clone (STJ13100093) at a concentration of 10 ug/ml. DAPI counterstained appearing in blue.



Staining of a cytospin preparation of peripheral blood mononuclear cells (PBMC) isolated from buffycoat. Cells were left to air dry and then fixed with cold acetone (90 seconds) and blocked with PBS containing 1% FCS and 0.1% saponin (blocking buffer) for 20 minutes. Cells were then washed twice in PBS and incubated with Mouse monoclonal to Cathelicidin: OSX12 clone (STJ13100093) at a concentration of 10 ug/ml. DAPI counterstained appearing in blue. The antibody selectively recognizes polymorphonuclear cells.



Staining of a cytospin preparation of peripheral blood mononuclear cells (PBMC) isolated from buffycoat. Cells were left to air dry and then fixed with cold acetone (90 seconds) and blocked with PBS containing 1% FCS and 0.1% saponin (blocking buffer) for 20 minutes. Cells were then washed twice in PBS and incubated with Mouse monoclonal to Cathelicidin: OSX12 clone (STJ13100093) at a concentration of 10 ug/ml. The antibody selectively recognizes polymorphonuclear cells.



Staining of a cytospin preparation of peripheral blood mononuclear cells (PBMC) isolated from buffycoat. Cells were left to air dry and then fixed with cold acetone (90 seconds) and blocked with PBS containing 1% FCS and 0.1% saponin (blocking buffer) for 20 minutes. Cells were then washed twice in PBS and incubated with Mouse monoclonal to Cathelicidin: OSX12 clone (STJ13100093) at a concentration of 10 ug/ml. DAPI counterstained appearing in blue. The antibody selectively recognizes polymorphonuclear cells.