

Anti-CD36 antibody (ECD) (STJ13100092)

GENERAL INFORMATION

Product Type	Primary antibodies
Applications	IHC/WB
Host / Source	Rabbit
Reactivity	Human

PRODUCT PROPERTIES

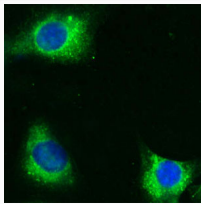
Clonality	Polyclonal
Conjugation	Unconjugated
Purification	IgG purified
Dilution Range	IHC, WB. A concentration of 10-50 ug/ml is recommended. The optimal concentration should be determined by the end user. Not yet tested in other applications.
Formulation	Lyophilised
Isotype	IgG
Storage Instruction	Maintain the lyophilised/reconstituted antibodies frozen at -20°C for long term storage and refrigerated at 2-8°C for a shorter term. When reconstituting, Glycerol (1:1) may be added for an additional stability. Avoid freeze and thaw cycles.

TARGET INFORMATION

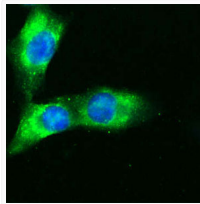
Gene ID	948
Gene Symbol	CD36
UniProt ID	CD36_HUMAN
Immunogen Region	ECD
Specificity	Specific for CD36.

ADDITIONAL INFORMATION

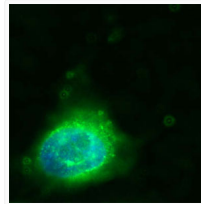
Note **STRICTLY FOR FURTHER SCIENTIFIC RESEARCH USE ONLY (RUO). MUST NOT TO BE USED IN DIAGNOSTIC OR THERAPEUTIC APPLICATIONS.**



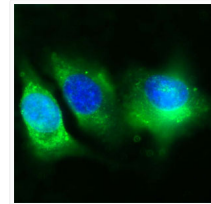
Human Melanoma cell line C 32 was cultured overnight on round cover slides placed in a 24 well tissue culture plate. Culture media removed and washed twice with PBS before fixing with 2% formalin for 10 minutes. Cells were then washed three times with PBS and incubated with Tris 0.01M containing Triton X 0.005% for 15 minutes. Cells were washed and incubated with 100 ul of Rabbit antibody to extracellular domain of human CD36 (Fatty acid translocase) : IgG (STJ13100092) diluted 1: 100 in the blocking buffer for 30 minutes. Welles were then washed 7 times with PBS and incubated with 100 ul of anti Rb-FITC conjugate diluted 1: 100 in the blocking buffer for further 30 minutes. Cells were washed as before and nuclear counter stained with Hoechst and mounted on to slides.



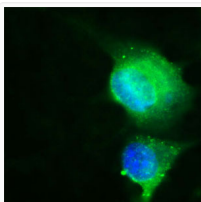
Human Melanoma cell line C 32 was cultured overnight on round cover slides placed in a 24 well tissue culture plate. Culture media removed and washed twice with PBS before fixing with 2% formalin for 10 minutes. Cells were then washed three times with PBS and incubated with Tris 0.01M containing Triton X 0.005% for 15 minutes. Cells were washed and incubated with 100 ul of Rabbit antibody to extracellular domain of human CD36 (Fatty acid translocase) : IgG (STJ13100092) diluted 1: 100 in the blocking buffer for 30 minutes. Welles were then washed 7 times with PBS and incubated with 100 ul of anti Rb-FITC conjugate diluted 1: 100 in the blocking buffer for further 30 minutes. Cells were washed as before and nuclear counter stained with Hoechst and mounted on to slides.



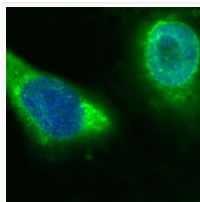
Human Melanoma cell line C 32 was cultured overnight on round cover slides placed in a 24 well tissue culture plate. Culture media removed and washed twice with PBS before fixing with 2% formalin for 10 minutes. Cells were then washed three times with PBS and incubated with Tris 0.01M containing Triton X 0.005% for 15 minutes. Cells were washed and incubated with 100 ul of Rabbit antibody to extracellular domain of human CD36 (Fatty acid translocase) : IgG (STJ13100092) diluted 1: 100 in the blocking buffer for 30 minutes. Welles were then washed 7 times with PBS and incubated with 100 ul of anti Rb-FITC conjugate diluted 1: 100 in the blocking buffer for further 30 minutes. Cells were washed as before and nuclear counter stained with Hoechst and mounted on to slides.



Human Melanoma cell line C 32 was cultured overnight on round cover slides placed in a 24 well tissue culture plate. Culture media removed and washed twice with PBS before fixing with 2% formalin for 10 minutes. Cells were then washed three times with PBS and incubated with Tris 0.01M containing Triton X 0.005% for 15 minutes. Cells were washed and incubated with 100 ul of Rabbit antibody to extracellular domain of human CD36 (Fatty acid translocase) : IgG (STJ13100092) diluted 1: 100 in the blocking buffer for 30 minutes. Welles were then washed 7 times with PBS and incubated with 100 ul of anti Rb-FITC conjugate diluted 1: 100 in the blocking buffer for further 30 minutes. Cells were washed as before and nuclear counter stained with Hoechst and mounted on to slides.



Human Melanoma cell line C 32 was cultured overnight on round cover slides placed in a 24 well tissue culture plate. Culture media removed and washed twice with PBS before fixing with 2% formalin for 10 minutes. Cells were then washed three times with PBS and incubated with Tris 0.01M containing Triton X 0.005% for 15 minutes. Cells were washed and incubated with 100 ul of Rabbit antibody to extracellular domain of human CD36 (Fatty acid translocase) : IgG (STJ13100092) diluted 1: 100 in the blocking buffer for 30 minutes. Welles were then washed 7 times with PBS and incubated with 100 ul of anti Rb-FITC conjugate diluted 1: 100 in the blocking buffer for further 30 minutes. Cells were washed as before and nuclear counter stained with Hoechst and mounted on to slides.



Human Melanoma cell line C 32 was cultured overnight on round cover slides placed in a 24 well tissue culture plate. Culture media removed and washed twice with PBS before fixing with 2% formalin for 10 minutes. Cells were then washed three times with PBS and incubated with Tris 0.01M containing Triton X 0.005% for 15 minutes. Cells were washed and incubated with 100 ul of Rabbit antibody to extracellular domain of human CD36 (Fatty acid translocase) : IgG (STJ13100092) diluted 1: 100 in the blocking buffer for 30 minutes. Welles were then washed 7 times with PBS and incubated with 100 ul of anti Rb-FITC conjugate diluted 1: 100 in the blocking buffer for further 30 minutes. Cells were washed as before and nuclear counter stained with Hoechst and mounted on to slides.

FOR RESEARCH USE ONLY. Not intended for diagnostic or therapeutic use.

FOR RESEARCH USE ONLY. Not intended for diagnostic or therapeutic use.

St Johns Laboratory Ltd, Knowledge Dock Business Centre, University Way, London, E16 2RD | Tel: 0208 223 3081