

Anti-LL-37 antibody (STJ13100071)

GENERAL INFORMATION

Product Type	Primary antibodies
Applications	IHC/WB
Host / Source	Rabbit
Reactivity	Human

PRODUCT PROPERTIES

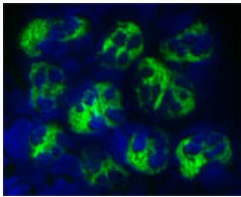
Clonality	Polyclonal
Conjugation	Unconjugated
Purification	IgG purified
Dilution Range	IHC, WB. Use at a concentration of 10-50 ug/ml. The optimal working concentration should be determined by the end user. Not yet tested in other applications.
Formulation	Lyophilised
Isotype	IgG
Storage Instruction	Maintain the lyophilised/reconstituted antibodies frozen at -20°C for long term storage and refrigerated at 2-8°C for a shorter term. When reconstituting, Glycerol (1:1) may be added for an additional stability. Avoid freeze and thaw cycles.

TARGET INFORMATION

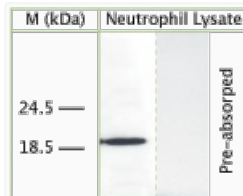
Gene ID	820
Gene Symbol	CAMP
UniProt ID	CAMP_HUMAN
Specificity	Specific for Cathelicidin antimicrobial peptide.

ADDITIONAL INFORMATION

Note **STRICTLY FOR FURTHER SCIENTIFIC RESEARCH USE ONLY (RUO). MUST NOT TO BE USED IN DIAGNOSTIC OR THERAPEUTIC APPLICATIONS.**



Staining of a cytospin preparation of peripheral blood mononuclear cells isolated from buffycoat. Cells were left to air dry and then fixed with cold acetone (90 seconds) and blocked with PBS containing 1% FCS and 0.1% saponin (blocking buffer) for 20 minutes. Cells were then washed twice in PBS and incubated with Rabbit antibody to LL-37 (STJ13100071), diluted 50 ug/ml: in blocking buffer, for 1 hour at room temperature. Cells were washed twice in PBS followed by incubation for 30 minutes with the FITC-labeled secondary antibody. Finally, cells were washed and nuclear counterstained with DAPI. The antibody selectively recognizes polymorphonuclear cells.



WB on human neutrophil lysate using Rabbit antibody to LL-37 (STJ13100071) at 50 ug/ml concentration. Pre-absorption of the antibody with the immunising peptide completely abolishes the detected band.