

Anti-KRT20 antibody (245-424) (STJ119970)

GENERAL INFORMATION

Product Type	Primary antibodies
Applications	WB/IF/ICC/ELISA
Host / Source	Rabbit
Reactivity	Human/Mouse/Rat

PRODUCT PROPERTIES

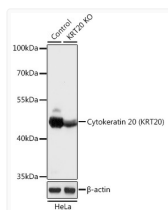
Clonality	Polyclonal
Concentration	Lot specific
Conjugation	Unconjugated
Purification	Affinity purification
Dilution Range	WB:1:500-1:2000 IF/CC:1:50-1:200 ELISA:Recommended starting concentration is 1 µg/mL. Please optimize the concentration based on your specific assay requirements.
Formulation	PBS with 0.01% Thimerosal, 50% Glycerol, pH 7.3.
Isotype	IgG
Molecular Weight	Protein Mw: 48kDa Observed Mw: 48kDa
Storage Instruction	Store at -20°C for up to 1 year from the date of receipt, and avoid repeat freeze-thaw cycles.

TARGET INFORMATION

Gene ID	54474
Gene Symbol	KRT20
UniProt ID	K1C20_HUMAN
Immunogen Region	245-424
Immunogen Sequence	KYEVMAQKNLQEAKEQFERQ TAVLQQQVTVNTEELKGTEV QLTELRRTSQSLEIELQSHL SMKESLEHTLEETKARYSSQ LANLQSLLSLEAQLMQIRS NMERQNNNEYHILLDIKTRLE QEIATYRRLLGEDVKTTEY QLSTLEERDIKKTRKIKTVV QEVVDGKVVSSSEVKEVEENI
Specificity	Recombinant fusion protein containing a sequence corresponding to amino acids 245-424 of human Cytokeratin 20 (Cytokeratin 20 (KRT20)) (NP_061883.1).

ADDITIONAL INFORMATION

Note **STRICTLY FOR FURTHER SCIENTIFIC RESEARCH USE ONLY (RUO). MUST NOT TO BE USED IN DIAGNOSTIC OR THERAPEUTIC APPLICATIONS.**



Western blot analysis of lysates from wild type (WT) and Cytokeratin 20 (Cytokeratin 20 (KRT20)) knockout (KO) HeLa cells, using [KO Validated] Cytokeratin 20 (KRT20) Rabbit polyclonal antibody (STJ119970) at 1:1000 dilution. Secondary antibody: HRP Goat Anti-Rabbit IgG (H+L) (STJS000856) at 1:10000 dilution. Lysates/proteins: 25 µg per lane. Blocking buffer: 3% nonfat dry milk in TBST. Detection: ECL Basic Kit. Exposure time: 1s.