

## Anti-SEN2 antibody (366-589) (STJ119967)

### GENERAL INFORMATION

Product Type	Primary antibodies
Applications	WB/IHC-P/ELISA
Host / Source	Rabbit
Reactivity	Human/Mouse/Rat

### PRODUCT PROPERTIES

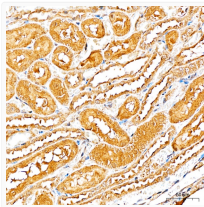
Clonality	Polyclonal
Concentration	Lot specific
Conjugation	Unconjugated
Purification	Affinity purification
Dilution Range	WB:1:500-1:2000 IHC-P:1:50-1:200 ELISA:Recommended starting concentration is 1 $\mu$ g/mL. Please optimize the concentration based on your specific assay requirements.
Formulation	PBS with 0.05% Proclin300, 50% Glycerol, pH 7.3.
Isotype	IgG
Molecular Weight	Protein Mw: 68kDa Observed Mw: 68kDa
Storage Instruction	Store at -20°C for up to 1 year from the date of receipt, and avoid repeat freeze-thaw cycles.

### TARGET INFORMATION

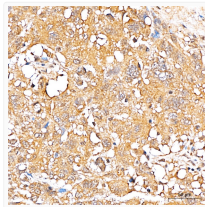
Gene ID	<a href="#">59343</a>
Gene Symbol	<a href="#">SEN2</a>
UniProt ID	<a href="#">SEN2_HUMAN</a>
Immunogen Region	366-589
Immunogen Sequence	LELTEDMEKEISNALGHGPQ DEILSSAFKLRITRGDIQTL KNYHWLNDEVINFYMNLLVE RNKKQGYPALHVFSTFFYPK LKSGGYQAVKRWTKGVNLFQ QEILVPIHRKVHWSLVVID LRKKCLKYLDMSGQKGRIC EILLQYLQDESKTKRNSDLN LEWTHHSMKPHEIPQQLNG SDCGMFTCKYADYISRDKPI TFTQHQMPLFRKKMVWEILH QQLL
Specificity	Recombinant fusion protein containing a sequence corresponding to amino acids 366-589 of human SEN2 (NP_067640.2).

### ADDITIONAL INFORMATION

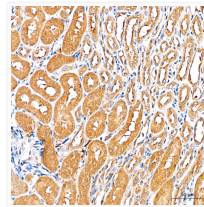
Note **STRICTLY FOR FURTHER SCIENTIFIC RESEARCH USE ONLY (RUO). MUST NOT TO BE USED IN DIAGNOSTIC OR THERAPEUTIC APPLICATIONS.**



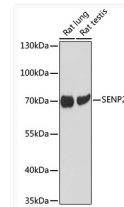
Immunohistochemistry analysis of paraffin-embedded Rat kidney tissue using SEN2 Rabbit polyclonal antibody (STJ119967) at a dilution of 1:100 (40x lens). High pressure antigen retrieval performed with 0.01M Citrate Buffer (pH 6.0) prior to immunohistochemistry staining.



Immunohistochemistry analysis of paraffin-embedded Human lung cancer tissue using SEN2 Rabbit polyclonal antibody (STJ119967) at a dilution of 1:100 (40x lens). High pressure antigen retrieval performed with 0.01M Citrate Buffer (pH 6.0) prior to immunohistochemistry staining.



Immunohistochemistry analysis of paraffin-embedded Mouse kidney tissue using SEN2 Rabbit polyclonal antibody (STJ119967) at a dilution of 1:100 (40x lens). High pressure antigen retrieval performed with 0.01M Citrate Buffer (pH 6.0) prior to immunohistochemistry staining.



Western blot analysis of various lysates, using SEN2 Rabbit polyclonal antibody (STJ119967) at 1:1000 dilution. Secondary antibody: HRP Goat Anti-Rabbit IgG (H+L) (STJS000856) at 1:10000 dilution. Lysates/proteins: 25  $\mu$ g per lane. Blocking buffer: 3% nonfat dry milk in TBST. Detection: ECL Basic Kit. Exposure time: 90s.