

Anti-DUSP8 antibody (1-14) (STJ119964)

GENERAL INFORMATION

Product Type	Primary antibodies
Applications	WB/IF/ICC/ELISA
Host / Source	Rabbit
Reactivity	Human/Mouse/Rat

PRODUCT PROPERTIES

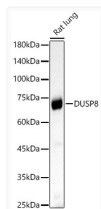
Clonality	Polyclonal
Concentration	Lot specific
Conjugation	Unconjugated
Purification	Affinity purification
Dilution Range	WB:1:1000-1:5000 IF/CC:1:500-1:1000 ELISA:Recommended starting concentration is 1 μ g/mL. Please optimize the concentration based on your specific assay requirements.
Formulation	PBS with 0.05% Proclin300, 50% Glycerol, pH 7.3.
Isotype	IgG
Molecular Weight	Protein Mw: 66kDa Observed Mw: 66kDa
Storage Instruction	Store at -20°C for up to 1 year from the date of receipt, and avoid repeat freeze-thaw cycles.

TARGET INFORMATION

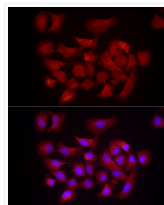
Gene ID	1850
Gene Symbol	DUSP8
UniProt ID	DUS8_HUMAN
Immunogen Region	1-14
Immunogen Sequence	MAGDRLPRKVMDAKKLASLL RGGPGGPLVIDSRSFVEYNS WHVLSSVNICCSKLVKRRLLQ QGKVTIAELIQPAARSQVEA TEPQDVVVYDQSTRDASVLA
Specificity	A synthetic peptide corresponding to a sequence within amino acids 1-100 of human DUSP8 (NP_004411.2).

ADDITIONAL INFORMATION

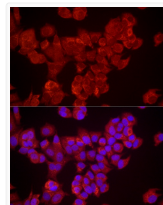
Note **STRICTLY FOR FURTHER SCIENTIFIC RESEARCH USE ONLY (RUO). MUST NOT TO BE USED IN DIAGNOSTIC OR THERAPEUTIC APPLICATIONS.**



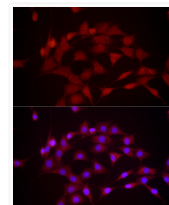
Western blot analysis of Rat lung, using DUSP8 rabbit polyclonal antibody (STJ119964) at 1:2000 dilution. Secondary antibody: HRP Goat Anti-rabbit IgG (H+L) (STJS000856) at 1:10000 dilution. Lysates/proteins: 25 μ g per lane. Blocking buffer: 3% non-fat dry milk in TBST. Detection: ECL Basic Kit. Exposure time: 60s.



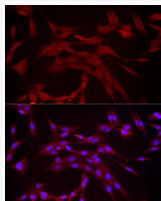
Immunofluorescence analysis of HeLa cells using DUSP8 rabbit polyclonal antibody (STJ119964) at dilution of 1:1000 (40x lens). Blue: DAPI for nuclear staining.



Immunofluorescence analysis of MCF7 cells using DUSP8 rabbit polyclonal antibody (STJ119964) at dilution of 1:1000 (40x lens). Blue: DAPI for nuclear staining.



Immunofluorescence analysis of NIH/3T3 cells using DUSP8 rabbit polyclonal antibody (STJ119964) at dilution of 1:1000 (40x lens). Blue: DAPI for nuclear staining.



Immunofluorescence analysis of PC-12 cells using DUSP8 rabbit polyclonal antibody (STJ119964) at dilution of 1:1000 (40x lens). Blue: DAPI for nuclear staining.