

Anti-MT-ND4 antibody (401-459) (STJ119949)

GENERAL INFORMATION

Product Type	Primary antibodies
Applications	WB/IHC-P/IF/ICC/ELISA
Host / Source	Rabbit
Reactivity	Human/Mouse/Rat

PRODUCT PROPERTIES

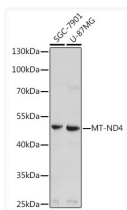
Clonality	Polyclonal
Concentration	Lot specific
Conjugation	Unconjugated
Purification	Affinity purification
Dilution Range	WB:1:500-1:2000 IHC-P:1:50-1:200 IF/ICC:1:50-1:200 ELISA:Recommended starting concentration is 1 µg/mL. Please optimize the concentration based on your specific assay requirements.
Formulation	PBS with 0.09% Sodium Azide, 50% Glycerol, pH 7.3.
Isotype	IgG
Molecular Weight	Protein Mw: 52kDa Observed Mw: 51kDa
Storage Instruction	Store at -20°C for up to 1 year from the date of receipt, and avoid repeat freeze-thaw cycles.

TARGET INFORMATION

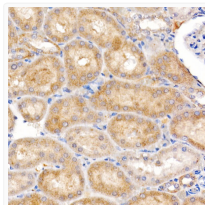
Gene ID	4538
Gene Symbol	MT-ND4
UniProt ID	NU4M_HUMAN
Immunogen Region	401-459
Immunogen Sequence	LVTALYSLYMFTTTQWGLT HHINNMKPSFTRENTLMFMH LSPILLLSLNPDIITGFSS
Specificity	A synthetic peptide corresponding to a sequence within amino acids 401-459 of human MT-ND4 (YP_002124311.1).

ADDITIONAL INFORMATION

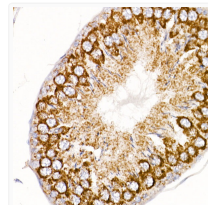
Note STRICTLY FOR FURTHER SCIENTIFIC RESEARCH USE ONLY (RUO). MUST NOT TO BE USED IN DIAGNOSTIC OR THERAPEUTIC APPLICATIONS.



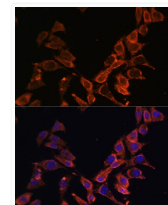
Western blot analysis of extracts of various cell lines, using MT-ND4 antibody (STJ119949) at 1:1000 dilution. Secondary antibody: HRP Goat Anti-rabbit IgG (H+L) (STJS000856) at 1:10000 dilution. Lysates/proteins: 25 µg per lane. Blocking buffer: 3% non-fat dry milk in TBST. Detection: ECL Basic Kit. Exposure time: 3min.



Immunohistochemistry analysis of paraffin-embedded rat kidney using MT-ND4 rabbit polyclonal antibody (STJ119949) at dilution of 1:200 (40x lens). Perform high pressure antigen retrieval with 10 mM citrate buffer pH 6.0 before commencing with immunohistochemistry staining protocol.



Immunohistochemistry analysis of paraffin-embedded rat ovary using MT-ND4 rabbit polyclonal antibody (STJ119949) at dilution of 1:200 (40x lens). Perform high pressure antigen retrieval with 10 mM citrate buffer pH 6.0 before commencing with immunohistochemistry staining protocol.



Immunofluorescence analysis of L929 cells using MT-ND4 antibody (STJ119949) at dilution of 1:100. Blue: DAPI for nuclear staining.