

Anti-PDE3A antibody (380-660) (STJ119906)

GENERAL INFORMATION

Product Type	Primary antibodies
Applications	WB/IHC-P/IF/ICC/ELISA
Host / Source	Rabbit
Reactivity	Human/Mouse/Rat

PRODUCT PROPERTIES

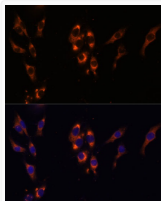
Clonality	Polyclonal
Concentration	Lot specific
Conjugation	Unconjugated
Purification	Affinity purification
Dilution Range	WB:1:500-1:2000 IHC-P:1:50-1:200 IF/ICC:1:50-1:100 ELISA:Recommended starting concentration is 1 Mu g/mL. Please optimize the concentration based on your specific assay requirements.
Formulation	PBS with 0.05% Proclin300, 50% Glycerol, pH 7.3.
Isotype	IgG
Molecular Weight	Protein Mw: 125kDa Observed Mw: 125kDa
Storage Instruction	Store at -20°C for up to 1 year from the date of receipt, and avoid repeat freeze-thaw cycles.

TARGET INFORMATION

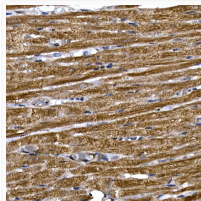
Gene ID	5139
Gene Symbol	PDE3A
UniProt ID	PDE3A_HUMAN
Immunogen Region	380-660
Immunogen Sequence	LLSTQLTFQAIHKPRVNPVT SLSENYTCSDSEESSEKDKL AIPKRLRRSLPGLLRVSS TWTTTTSATGLPTLEPAPVR RDRSTSIKLEAPSSSPDSW NNPVMMTLTKRSRFTSSYAI SAANHVKAKKQSRPGALAKI SPLSSPCSSPLQGTPASSLV SKISAVQFPESADTTAKQSL GSHRALTYTQSAPDLSPQIL TPPVICSSCGRPYSQGNPAD EPLERSGVATRTPSRDDT
Specificity	Recombinant fusion protein containing a sequence corresponding to amino acids 380-660 of human PDE3A (NP_000912.3).

ADDITIONAL INFORMATION

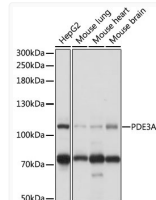
Note **STRICTLY FOR FURTHER SCIENTIFIC RESEARCH USE ONLY (RUO). MUST NOT TO BE USED IN DIAGNOSTIC OR THERAPEUTIC APPLICATIONS.**



Immunofluorescence analysis of HeLa cells using PDE3A Polyclonal Antibody (STJ119906) at dilution of 1:100 (40x lens). Blue: DAPI for nuclear staining.



Immunohistochemistry analysis of paraffin-embedded rat heart using PDE3A Rabbit polyclonal antibody (STJ119906) at dilution of 1:200 (40x lens). Perform high pressure antigen retrieval with 10 mM citrate buffer pH 6.0 before commencing with immunohistochemistry staining protocol.



Western blot analysis of extracts of various cell lines, using PDE3A antibody (STJ119906) at 1:1000 dilution. Secondary antibody: HRP Goat Anti-Rabbit IgG (H+L) (STJS000856) at 1:10000 dilution. Lysates/proteins: 25 Mu g per lane. Blocking buffer: 3% nonfat dry milk in TBST. Detection: ECL Basic Kit. Exposure time: 5s.